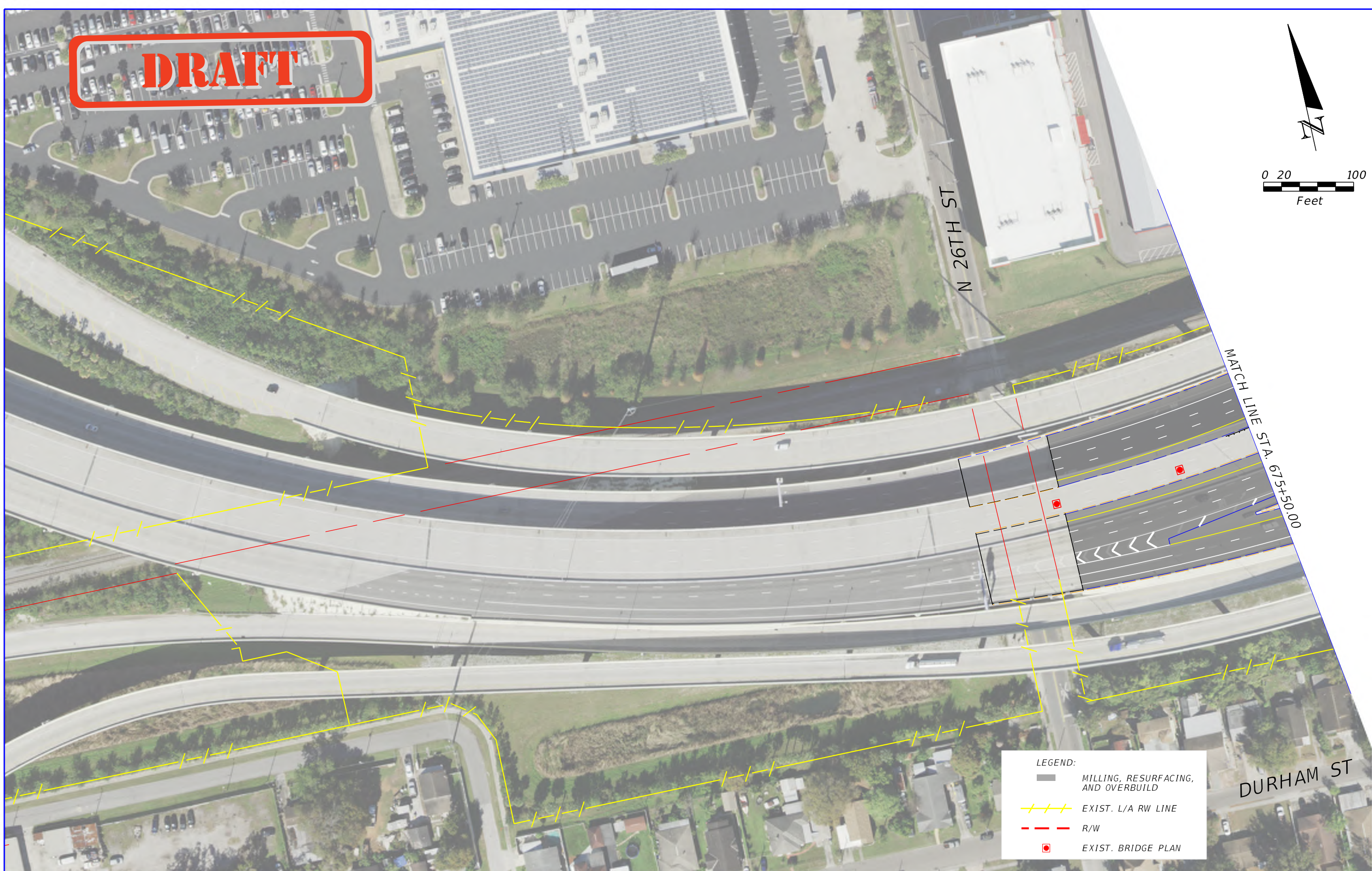
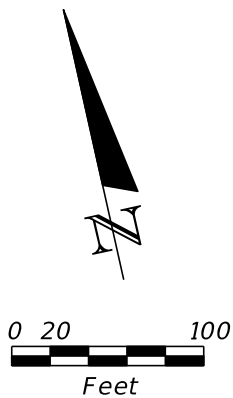


DRAFT



LEGEND:

	MILLING, RESURFACING, AND OVERBUILD
	EXIST. L/A RW LINE
	R/W
	EXIST. BRIDGE PLAN

REVISIONS			
DATE	DESCRIPTION	DATE	DESCRIPTION

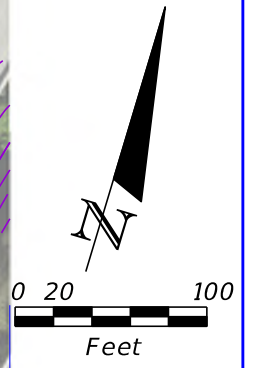
Kimley»Horn
 Certificate Of Authorization No. 696
 Ramon F. Breton, P.E.
 P.E. License No. 53139
 200 South Orange Avenue, Suite 600
 Orlando, Florida 32801

TAMPA HILLSBOROUGH EXPRESSWAY AUTHORITY		
ROAD NO.	COUNTY	THEA PROJECT NO.
618	HILLSBOROUGH	P-01619

ROADWAY PLAN

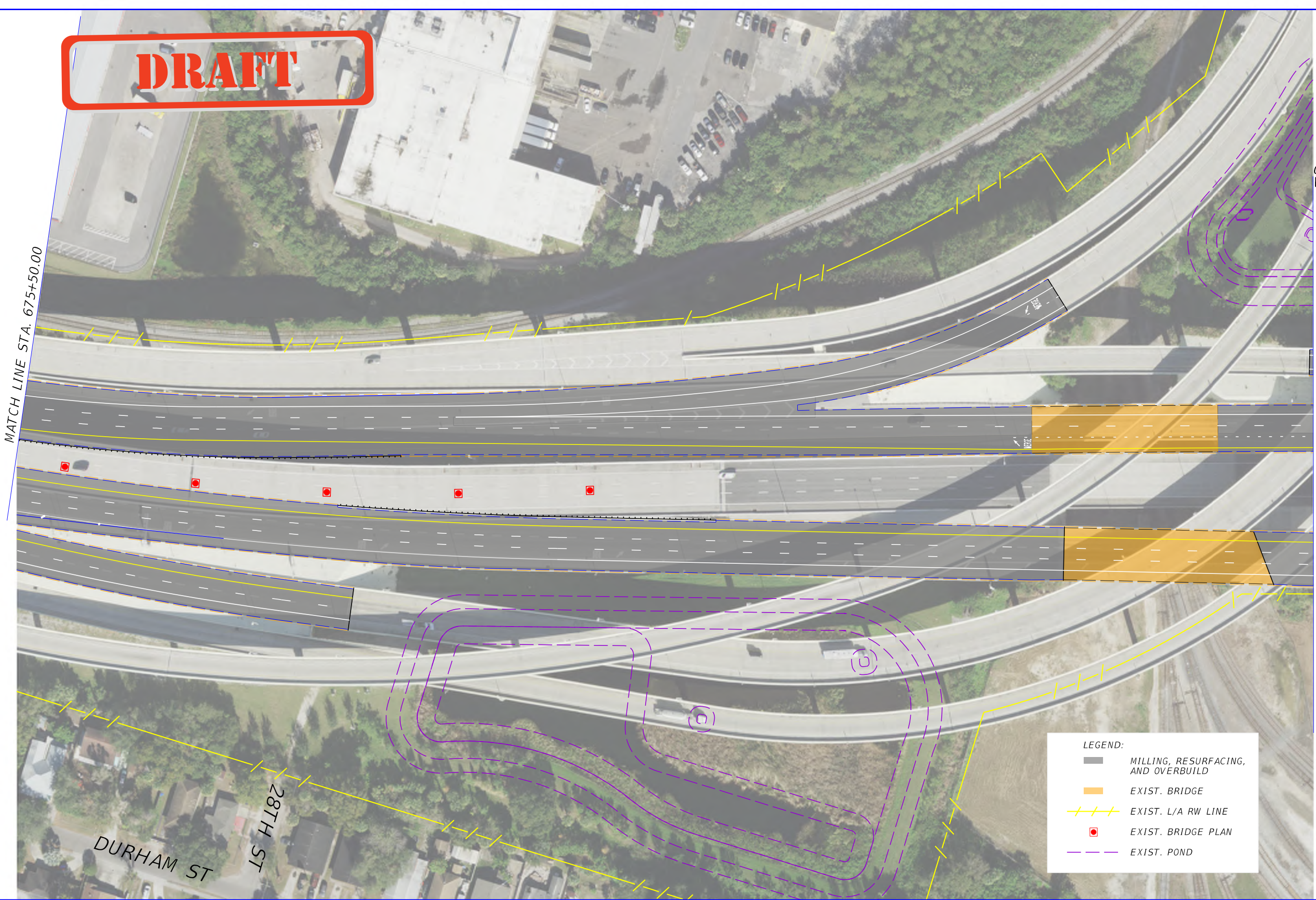
SHEET NO.
1

DRAFT



MATCH LINE STA. 675+50.00

MATCH LINE STA. 689+50.00



LEGEND:

- MILLING, RESURFACING, AND OVERBUILD
- EXIST. BRIDGE
- EXIST. L/A RW LINE
- EXIST. BRIDGE PLAN
- EXIST. POND

DURHAM ST
28TH ST

REVISIONS			
DATE	DESCRIPTION	DATE	DESCRIPTION

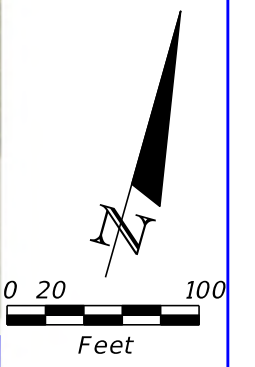
Kimley»Horn
 Certificate Of Authorization No. 696
 Ramon F. Breton, P.E.
 P.E. License No. 53139
 200 South Orange Avenue, Suite 600
 Orlando, Florida 32801

TAMPA HILLSBOROUGH EXPRESSWAY AUTHORITY		
ROAD NO.	COUNTY	THEA PROJECT NO.
618	HILLSBOROUGH	P-01619

ROADWAY PLAN

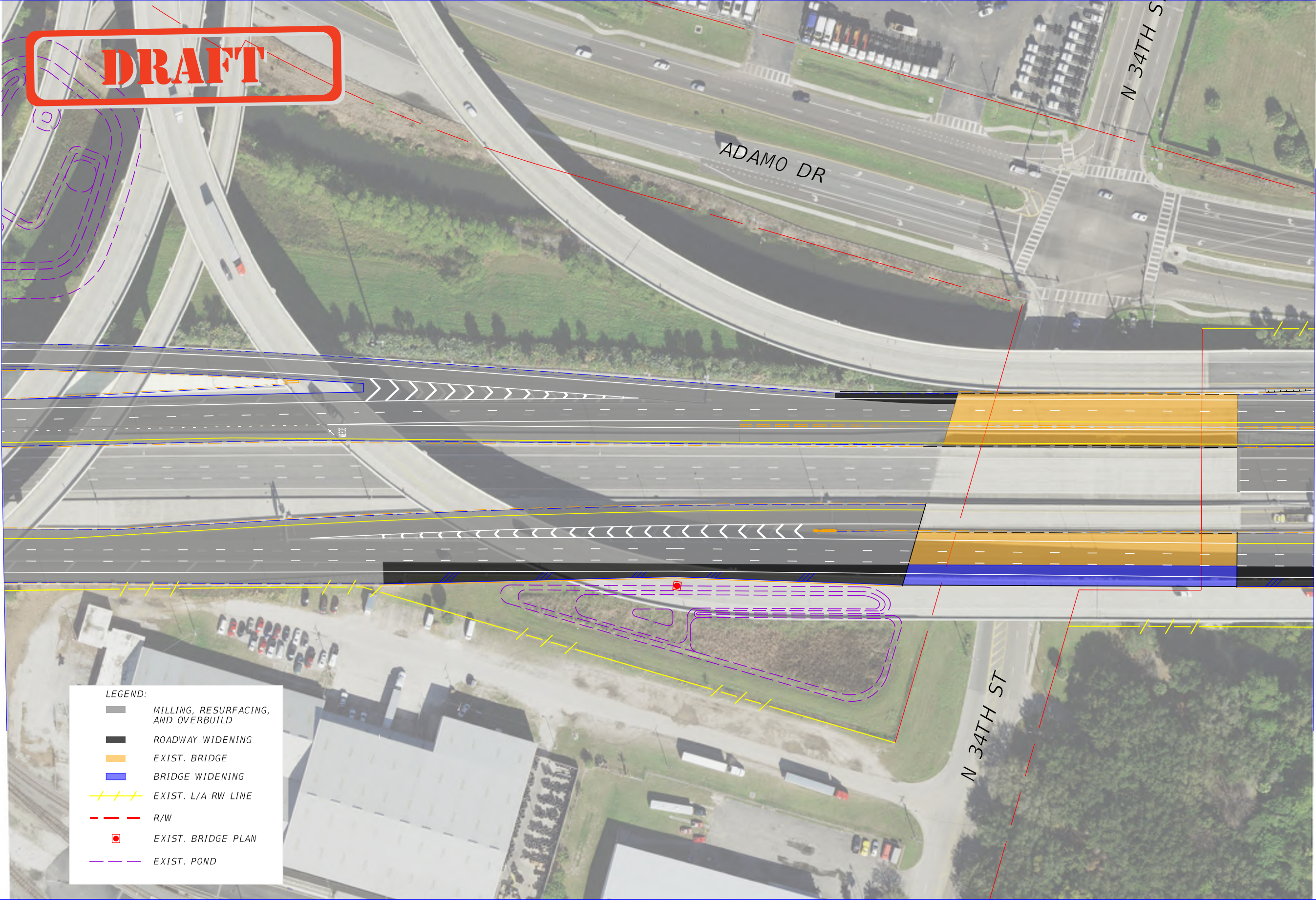
SHEET NO.
2

DRAFT



MATCH LINE STA. 689+50.00

MATCH LINE STA. 703+50.00



LEGEND:

- MILLING, RESURFACING, AND OVERBUILD
- ROADWAY WIDENING
- EXIST. BRIDGE
- BRIDGE WIDENING
- EXIST. L/A RW LINE
- R/W
- EXIST. BRIDGE PLAN
- EXIST. POND

REVISIONS			
DATE	DESCRIPTION	DATE	DESCRIPTION

Kimley»Horn
 Certificate Of Authorization No. 696
 Ramon F. Breton, P.E.
 P.E. License No. 53139
 200 South Orange Avenue, Suite 600
 Orlando, Florida 32801

TAMPA HILLSBOROUGH EXPRESSWAY AUTHORITY		
ROAD NO.	COUNTY	THEA PROJECT NO.
618	HILLSBOROUGH	P-01619

ROADWAY PLAN

SHEET NO.
3

DRAFT



E ADAMO DR

MATCH LINE STA. 703+50.00

MATCH LINE STA. 717+50.00

LEGEND:

- MILLING, RESURFACING, AND OVERBUILD
- ROADWAY WIDENING
- EXIST. L/A RW LINE
- R/W
- EXIST. BRIDGE PLAN
- EXIST. POND

REVISIONS	
DATE	DESCRIPTION

Kimley»Horn
 Certificate Of Authorization No. 696
 Ramon F. Breton, P.E.
 P.E. License No. 53139
 200 South Orange Avenue, Suite 600
 Orlando, Florida 32801

TAMPA HILLSBOROUGH EXPRESSWAY AUTHORITY		
ROAD NO.	COUNTY	THEA PROJECT NO.
618	HILLSBOROUGH	P-01619

ROADWAY PLAN

SHEET NO. 4

DRAFT



N 39TH ST

E ADAMO DR

MATCH LINE STA. 717+50.00

MATCH LINE STA. 731+50.00

LEGEND:

- MILLING, RESURFACING, AND OVERBUILD
- ROADWAY WIDENING
- EXIST. BRIDGE
- BRIDGE WIDENING
- EXIST. L/A RW LINE
- EXIST. BRIDGE PLAN
- EXIST. POND

REVISIONS			
DATE	DESCRIPTION	DATE	DESCRIPTION

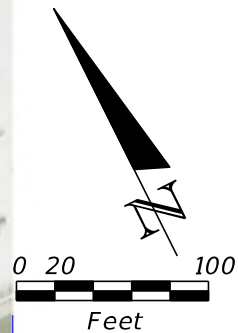
Kimley»Horn
 Certificate of Authorization No. 696
 Ramon F. Breton, P.E.
 P.E. License No. 53139
 200 South Orange Avenue, Suite 600
 Orlando, Florida 32801

TAMPA HILLSBOROUGH EXPRESSWAY AUTHORITY		
ROAD NO.	COUNTY	THEA PROJECT NO.
618	HILLSBOROUGH	P-01619

ROADWAY PLAN

SHEET NO. 5

DRAFT







E ADAMO DR

MATCH LINE STA. 731+50.00

MATCH LINE STA. 745+50.00

LEGEND:

	MILLING, RESURFACING, AND OVERBUILD
	ROADWAY WIDENING
	EXIST. L/A RW LINE
	EXIST. BRIDGE PLAN
	EXIST. POND

REVISIONS	
DATE	DESCRIPTION

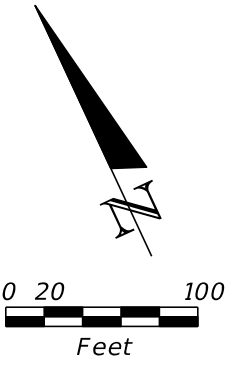
Kimley»Horn
 Certificate Of Authorization No. 696
 Ramon F. Breton, P.E.
 P.E. License No. 53139
 200 South Orange Avenue, Suite 600
 Orlando, Florida 32801

TAMPA HILLSBOROUGH EXPRESSWAY AUTHORITY		
ROAD NO.	COUNTY	THEA PROJECT NO.
618	HILLSBOROUGH	P-01619

ROADWAY PLAN

SHEET NO.
6

DRAFT



MATCH LINE STA. 745+50.00

MATCH LINE STA. 759+50.00

N 45TH ST

E ADAMO DR

LEGEND:

	MILLING, RESURFACING, AND OVERBUILD
	ROADWAY WIDENING
	EXIST. L/A RW LINE
	EXIST. POND

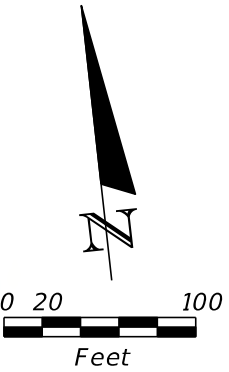
REVISIONS			
DATE	DESCRIPTION	DATE	DESCRIPTION

Kimley»Horn
 Certificate Of Authorization No. 696
 Ramon F. Breton, P.E.
 P.E. License No. 53139
 200 South Orange Avenue, Suite 600
 Orlando, Florida 32801

TAMPA HILLSBOROUGH EXPRESSWAY AUTHORITY		
ROAD NO.	COUNTY	THEA PROJECT NO.
618	HILLSBOROUGH	P-01619

<i>ROADWAY PLAN</i>	
7	

DRAFT



MATCH LINE STA. 759+50.00

MATCH LINE STA. 773+50.00



LEGEND:

	MILLING, RESURFACING, AND OVERBUILD
	ROADWAY WIDENING
	EXIST. BRIDGE
	BRIDGE WIDENING
	SOD
	EXIST. L/A RW LINE

REVISIONS		REVISIONS	
DATE	DESCRIPTION	DATE	DESCRIPTION

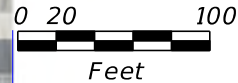
Kimley»Horn
 Certificate Of Authorization No. 696
 Ramon F. Breton, P.E.
 P.E. License No. 53139
 200 South Orange Avenue, Suite 600
 Orlando, Florida 32801

TAMPA HILLSBOROUGH EXPRESSWAY AUTHORITY		
ROAD NO.	COUNTY	THEA PROJECT NO.
618	HILLSBOROUGH	P-01619

ROADWAY PLAN

SHEET NO.
8

DRAFT



MATCH LINE STA. 773+50.00

MATCH LINE STA. 787+50.00

CSX RAILWAY

CSX RAILWAY

LEGEND:

- MILLING, RESURFACING, AND OVERBUILD
- ROADWAY WIDENING/NEW CONSTRUCTION
- EXIST. BRIDGE
- BRIDGE WIDENING
- SOD
- EXIST. L/A RW LINE
- EXIST. POND
- PROP. POND MODIFICATIONS

REVISIONS			
DATE	DESCRIPTION	DATE	DESCRIPTION

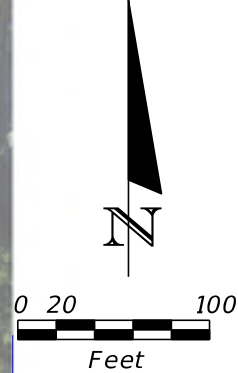
Kimley»Horn
 Certificate Of Authorization No. 696
 Ramon F. Breton, P.E.
 P.E. License No. 53139
 200 South Orange Avenue, Suite 600
 Orlando, Florida 32801

TAMPA HILLSBOROUGH EXPRESSWAY AUTHORITY		
ROAD NO.	COUNTY	THEA PROJECT NO.
618	HILLSBOROUGH	P-01619

ROADWAY PLAN

SHEET NO.
9




DRAFT



MATCH LINE STA. 787+50.00

MATCH LINE STA. 801+50.00

LEGEND:

	MILLING, RESURFACING, AND OVERBUILD
	ROADWAY WIDENING
	EXIST. L/A RW LINE

REVISIONS			
DATE	DESCRIPTION	DATE	DESCRIPTION

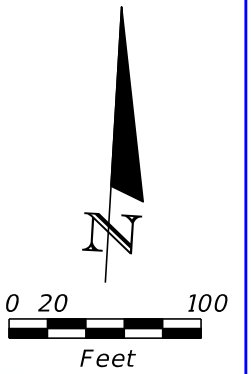
Kimley»Horn
 Certificate Of Authorization No. 696
 Ramon F. Breton, P.E.
 P.E. License No. 53139
 200 South Orange Avenue, Suite 600
 Orlando, Florida 32801

TAMPA HILLSBOROUGH EXPRESSWAY AUTHORITY		
ROAD NO.	COUNTY	THEA PROJECT NO.
618	HILLSBOROUGH	P-01619

ROADWAY PLAN

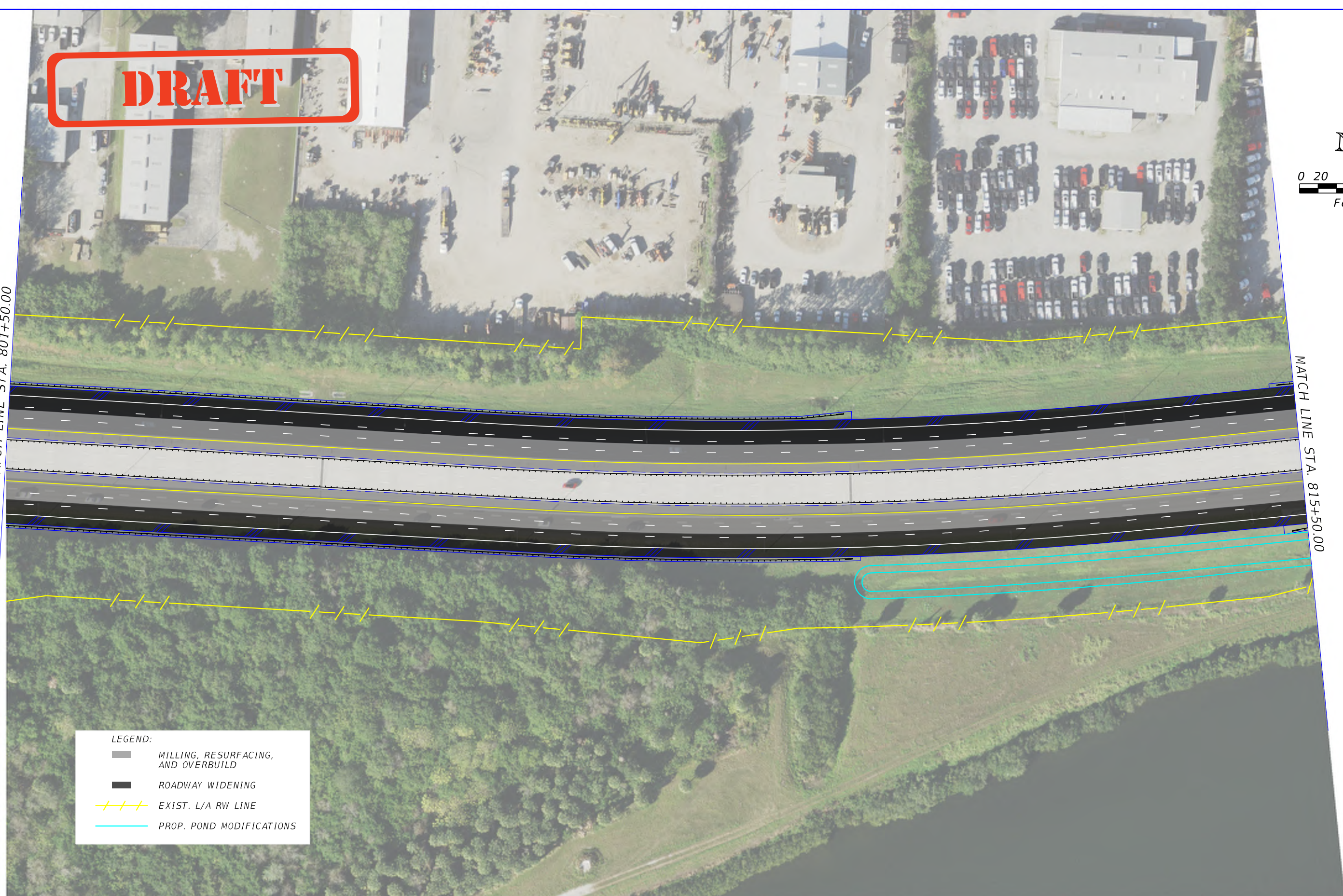
SHEET NO.
10

DRAFT







MATCH LINE STA. 801+50.00

MATCH LINE STA. 815+50.00



LEGEND:

	MILLING, RESURFACING, AND OVERBUILD
	ROADWAY WIDENING
	EXIST. L/A RW LINE
	PROP. POND MODIFICATIONS

REVISIONS			
DATE	DESCRIPTION	DATE	DESCRIPTION

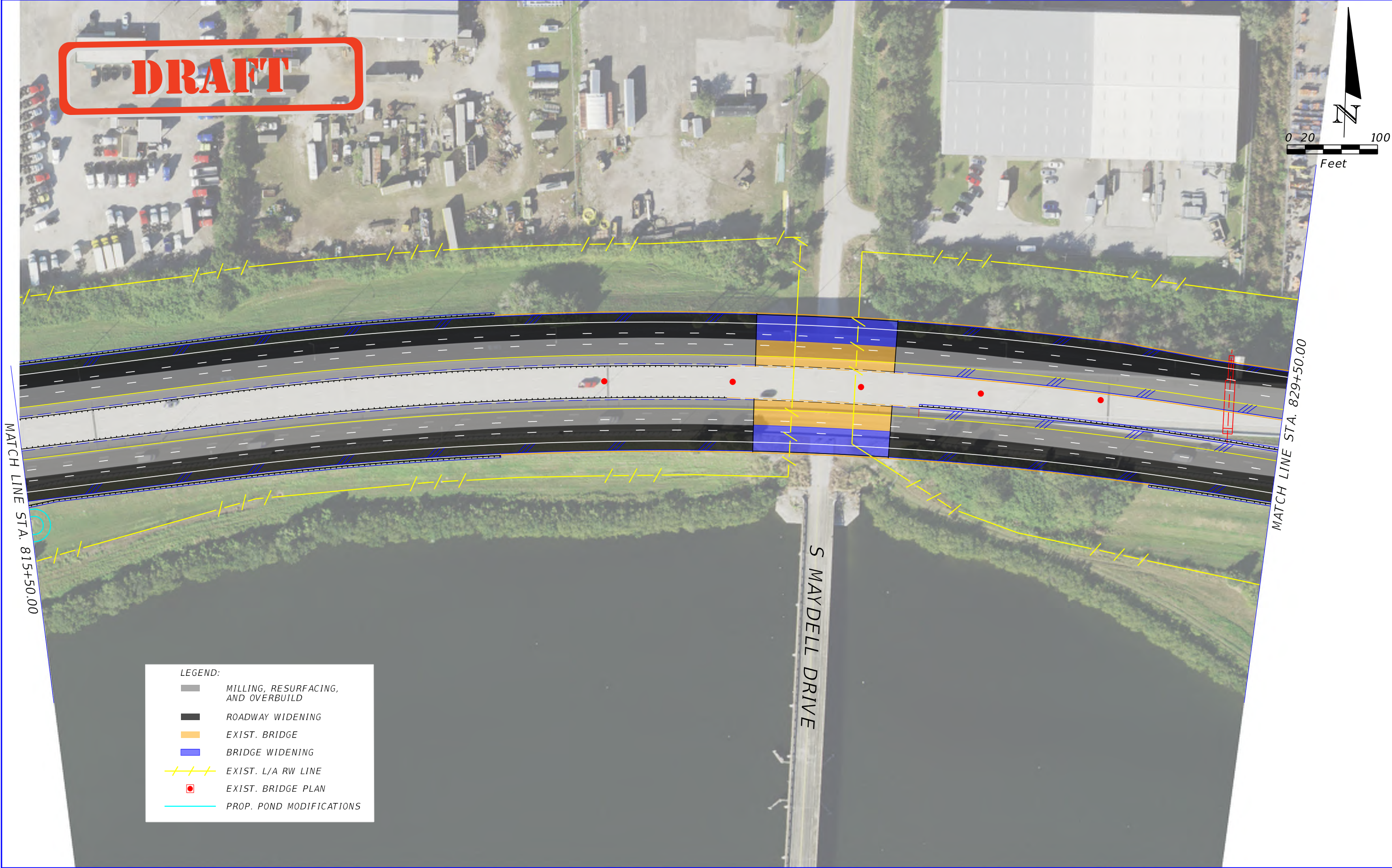
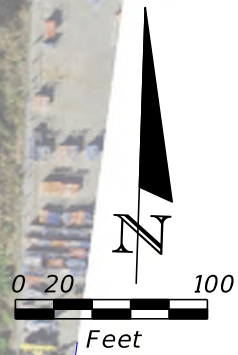
Kimley»Horn
 Certificate Of Authorization No. 696
 Ramon F. Breton, P.E.
 P.E. License No. 53139
 200 South Orange Avenue, Suite 600
 Orlando, Florida 32801

TAMPA HILLSBOROUGH EXPRESSWAY AUTHORITY		
ROAD NO.	COUNTY	THEA PROJECT NO.
618	HILLSBOROUGH	P-01619

ROADWAY PLAN

SHEET NO.
11

DRAFT



LEGEND:

	MILLING, RESURFACING, AND OVERBUILD
	ROADWAY WIDENING
	EXIST. BRIDGE
	BRIDGE WIDENING
	EXIST. L/A RW LINE
	EXIST. BRIDGE PLAN
	PROP. POND MODIFICATIONS

REVISIONS	
DATE	DESCRIPTION

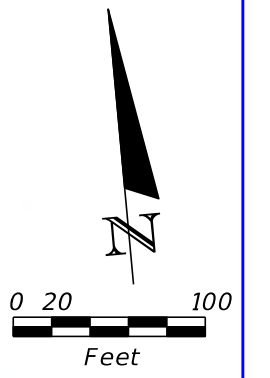
Kimley»Horn
 Certificate Of Authorization No. 696
 Ramon F. Breton, P.E.
 P.E. License No. 53139
 200 South Orange Avenue, Suite 600
 Orlando, Florida 32801

TAMPA HILLSBOROUGH EXPRESSWAY AUTHORITY		
ROAD NO.	COUNTY	THEA PROJECT NO.
618	HILLSBOROUGH	P-01619

ROADWAY PLAN

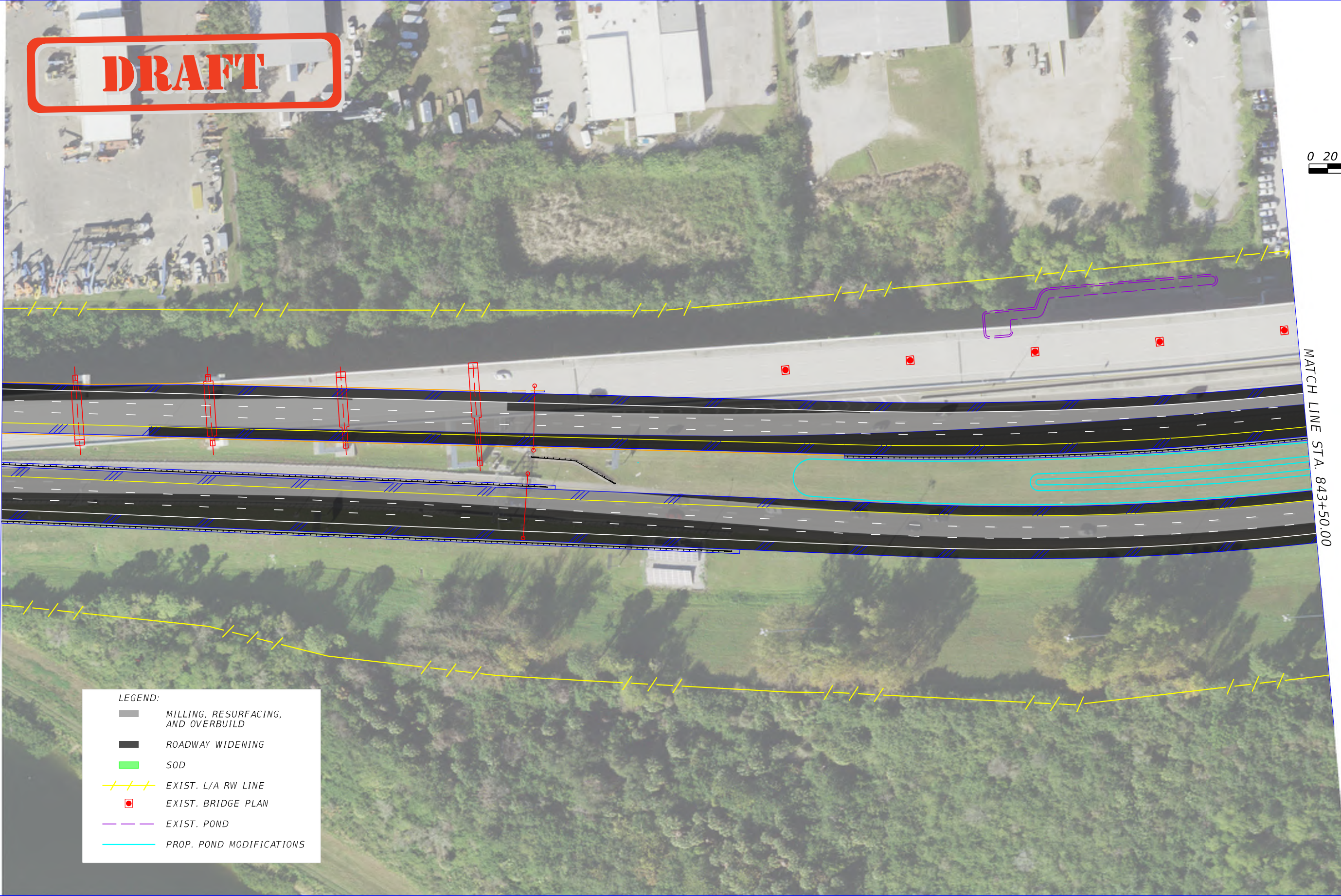
SHEET NO.
12

DRAFT



MATCH LINE STA. 829+50.00

MATCH LINE STA. 843+50.00



LEGEND:

- MILLING, RESURFACING, AND OVERBUILD
- ROADWAY WIDENING
- SOD
- EXIST. L/A RW LINE
- EXIST. BRIDGE PLAN
- EXIST. POND
- PROP. POND MODIFICATIONS

REVISIONS			
DATE	DESCRIPTION	DATE	DESCRIPTION

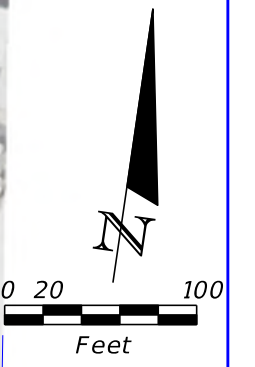
Kimley»Horn
 Certificate Of Authorization No. 696
 Ramon F. Breton, P.E.
 P.E. License No. 53139
 200 South Orange Avenue, Suite 600
 Orlando, Florida 32801

TAMPA HILLSBOROUGH EXPRESSWAY AUTHORITY		
ROAD NO.	COUNTY	THEA PROJECT NO.
618	HILLSBOROUGH	P-01619

ROADWAY PLAN

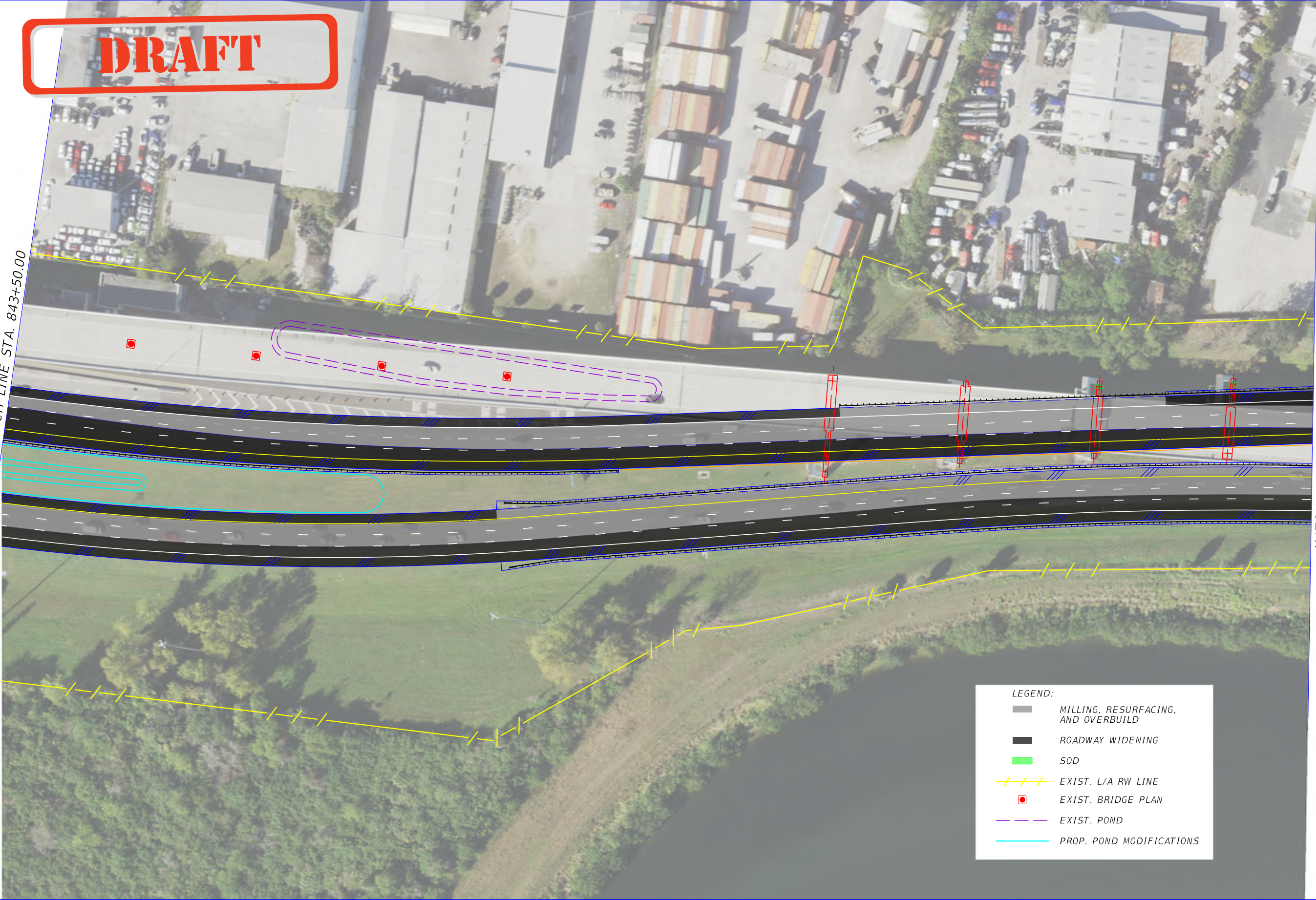
SHEET NO.
13

DRAFT



MATCH LINE STA. 843+50.00

MATCH LINE STA. 857+50.00



LEGEND:

- MILLING, RESURFACING, AND OVERBUILD
- ROADWAY WIDENING
- SOD
- EXIST. L/A RW LINE
- EXIST. BRIDGE PLAN
- EXIST. POND
- PROP. POND MODIFICATIONS

REVISIONS			
DATE	DESCRIPTION	DATE	DESCRIPTION

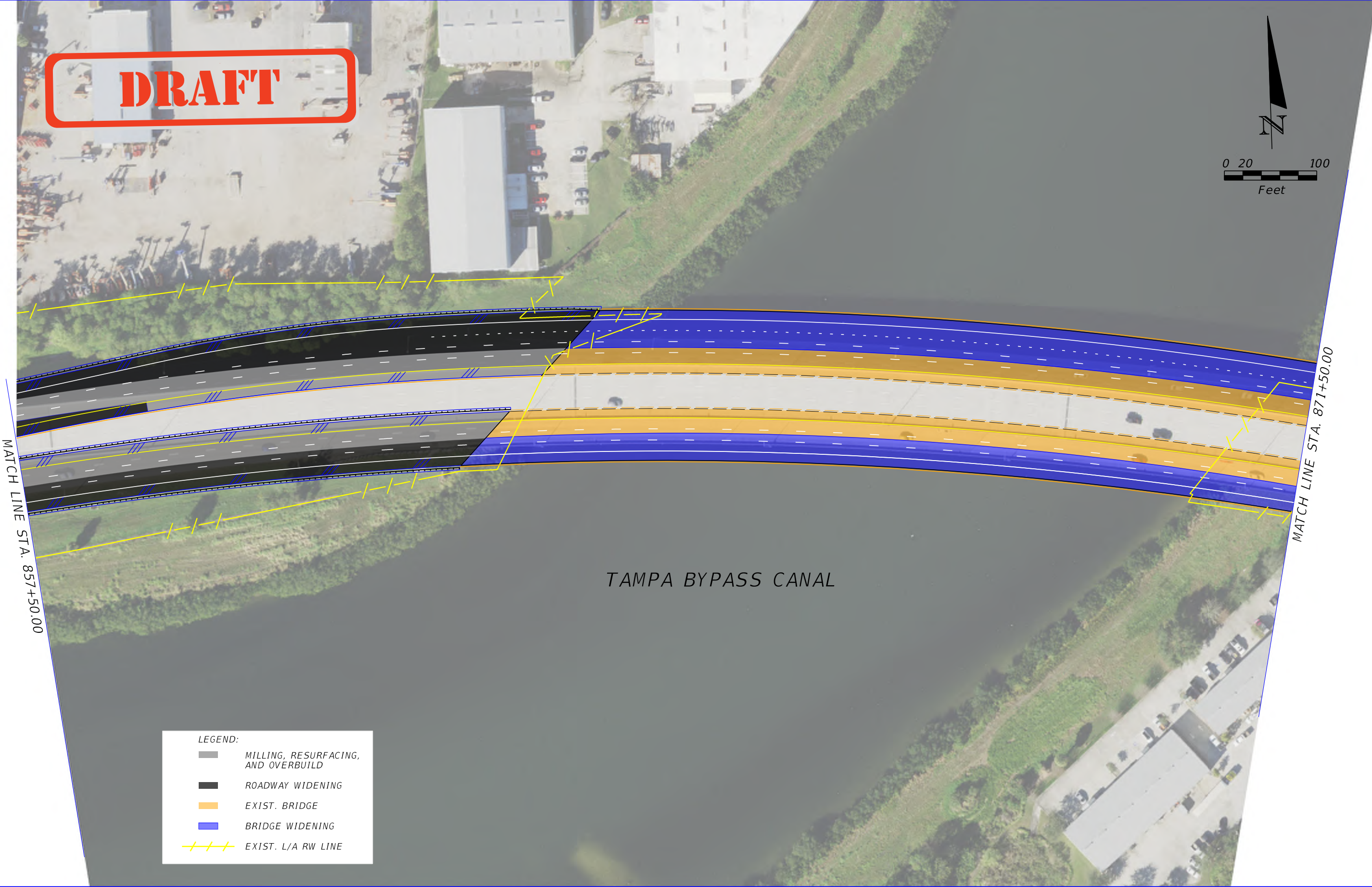
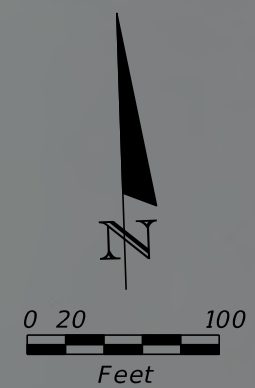
Kimley»Horn
 Certificate Of Authorization No. 696
 Ramon F. Breton, P.E.
 P.E. License No. 53139
 200 South Orange Avenue, Suite 600
 Orlando, Florida 32801

TAMPA HILLSBOROUGH EXPRESSWAY AUTHORITY		
ROAD NO.	COUNTY	THEA PROJECT NO.
618	HILLSBOROUGH	P-01619

ROADWAY PLAN

SHEET NO.
14

DRAFT



MATCH LINE STA. 857+50.00

MATCH LINE STA. 871+50.00

TAMPA BYPASS CANAL

LEGEND:

	MILLING, RESURFACING, AND OVERBUILD
	ROADWAY WIDENING
	EXIST. BRIDGE
	BRIDGE WIDENING
	EXIST. L/A RW LINE

REVISIONS	
DATE	DESCRIPTION

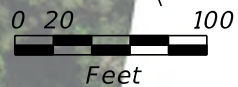
Kimley»Horn
 Certificate Of Authorization No. 696
 Ramon F. Breton, P.E.
 P.E. License No. 53139
 200 South Orange Avenue, Suite 600
 Orlando, Florida 32801

TAMPA HILLSBOROUGH EXPRESSWAY AUTHORITY		
ROAD NO.	COUNTY	THEA PROJECT NO.
618	HILLSBOROUGH	P-01619

ROADWAY PLAN

SHEET NO.
15

DRAFT



MATCH LINE STA. 871+50.00

MATCH LINE STA. 885+50.00

S 78TH ST

MATCH LINE A - SEE SHEET 26

LEGEND:

- MILLING, RESURFACING, AND OVERBUILD
- ROADWAY WIDENING
- EXIST. BRIDGE
- BRIDGE WIDENING
- EXIST. L/A RW LINE
- R/W
- EXIST. POND

REVISIONS			
DATE	DESCRIPTION	DATE	DESCRIPTION

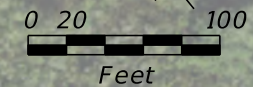
Kimley»Horn
 Certificate Of Authorization No. 696
 Ramon F. Breton, P.E.
 P.E. License No. 53139
 200 South Orange Avenue, Suite 600
 Orlando, Florida 32801

TAMPA HILLSBOROUGH EXPRESSWAY AUTHORITY		
ROAD NO.	COUNTY	THEA PROJECT NO.
618	HILLSBOROUGH	P-01619

ROADWAY PLAN

SHEET NO.
16




DRAFT



MATCH LINE STA. 885+50.00

MATCH LINE STA. 899+50.00

LEGEND:

-  MILLING, RESURFACING, AND OVERBUILD
-  ROADWAY WIDENING
-  EXIST. L/A RW LINE

REVISIONS			
DATE	DESCRIPTION	DATE	DESCRIPTION

Kimley»Horn

Certificate Of Authorization No. 696
 Ramon F. Breton, P.E.
 P.E. License No. 53139
 200 South Orange Avenue, Suite 600
 Orlando, Florida 32801

**TAMPA HILLSBOROUGH
 EXPRESSWAY AUTHORITY**

ROAD NO.	COUNTY	THEA PROJECT NO.
618	HILLSBOROUGH	P-01619

ROADWAY PLAN

SHEET NO.

17




DRAFT



MATCH LINE STA. 899+50.00

MATCH LINE STA. 913+50.00

LEGEND:

-  MILLING, RESURFACING, AND OVERBUILD
-  ROADWAY WIDENING
-  EXIST. L/A RW LINE

REVISIONS			
DATE	DESCRIPTION	DATE	DESCRIPTION

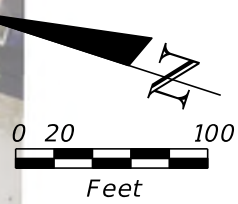
Kimley»Horn
 Certificate Of Authorization No. 696
 Ramon F. Breton, P.E.
 P.E. License No. 53139
 200 South Orange Avenue, Suite 600
 Orlando, Florida 32801

TAMPA HILLSBOROUGH EXPRESSWAY AUTHORITY		
ROAD NO.	COUNTY	THEA PROJECT NO.
618	HILLSBOROUGH	P-01619

ROADWAY PLAN

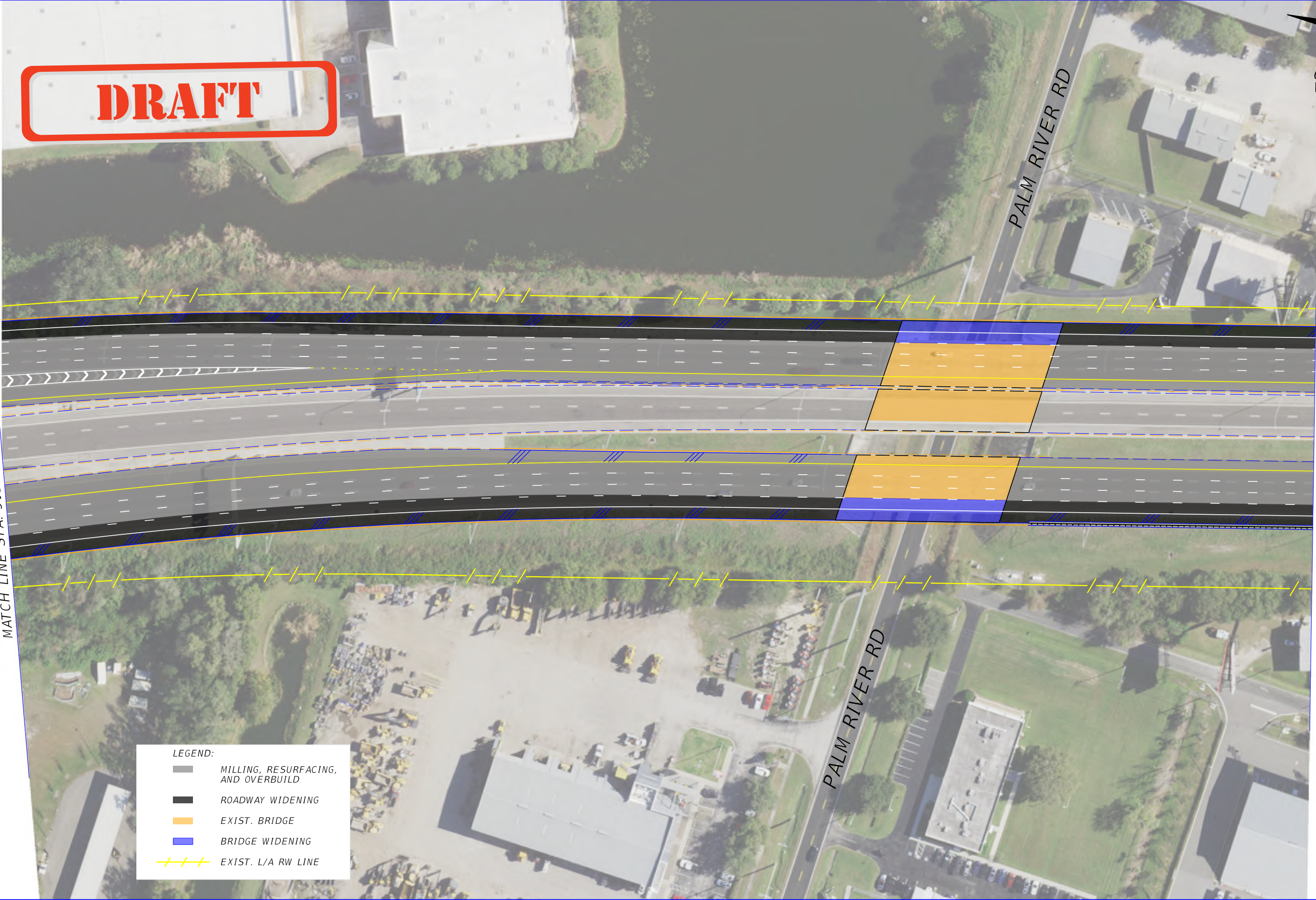
SHEET NO.
18

DRAFT



MATCH LINE STA. 913+50.00

MATCH LINE STA. 927+50.00



LEGEND:

	MILLING, RESURFACING, AND OVERBUILD
	ROADWAY WIDENING
	EXIST. BRIDGE
	BRIDGE WIDENING
	EXIST. L/A RW LINE

REVISIONS		REVISIONS	
DATE	DESCRIPTION	DATE	DESCRIPTION

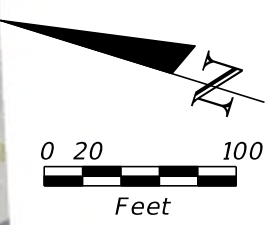
Kimley»Horn
 Certificate Of Authorization No. 696
 Ramon F. Breton, P.E.
 P.E. License No. 53139
 200 South Orange Avenue, Suite 600
 Orlando, Florida 32801

TAMPA HILLSBOROUGH EXPRESSWAY AUTHORITY		
ROAD NO.	COUNTY	THEA PROJECT NO.
618	HILLSBOROUGH	P-01619

ROADWAY PLAN

SHEET NO.
19

DRAFT






MATCH LINE STA. 927+50.00

MATCH LINE STA. 941+50.00



LEGEND:

	MILLING, RESURFACING, AND OVERBUILD
	ROADWAY WIDENING
	EXIST. L/A RW LINE

REVISIONS			
DATE	DESCRIPTION	DATE	DESCRIPTION

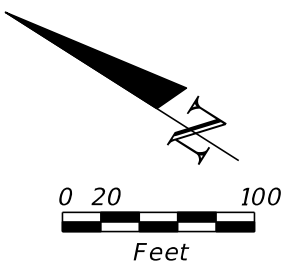
Kimley»Horn
 Certificate Of Authorization No. 696
 Ramon F. Breton, P.E.
 P.E. License No. 53139
 200 South Orange Avenue, Suite 600
 Orlando, Florida 32801

TAMPA HILLSBOROUGH EXPRESSWAY AUTHORITY		
ROAD NO.	COUNTY	THEA PROJECT NO.
618	HILLSBOROUGH	P-01619

ROADWAY PLAN

SHEET NO.
20

DRAFT



MATCH LINE STA. 941+50.00

MATCH LINE STA. 955+50.00

LEGEND:

	MILLING, RESURFACING, AND OVERBUILD
	ROADWAY WIDENING
	EXIST. L/A RW LINE

REVISIONS			
DATE	DESCRIPTION	DATE	DESCRIPTION

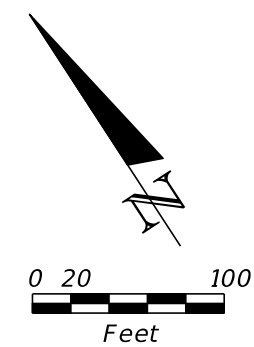
Kimley»Horn
 Certificate Of Authorization No. 696
 Ramon F. Breton, P.E.
 P.E. License No. 53139
 200 South Orange Avenue, Suite 600
 Orlando, Florida 32801

TAMPA HILLSBOROUGH EXPRESSWAY AUTHORITY		
ROAD NO.	COUNTY	THEA PROJECT NO.
618	HILLSBOROUGH	P-01619

ROADWAY PLAN

SHEET NO.
21

DRAFT



MATCH LINE STA. 955+50.00

MATCH LINE STA. 969+50.00

- LEGEND:**
- MILLING, RESURFACING, AND OVERBUILD
 - ROADWAY WIDENING
 - EXIST. BRIDGE
 - BRIDGE WIDENING
 - SOD
 - EXIST. L/A RW LINE
 - EXIST. POND
 - PROP. POND MODIFICATIONS

REVISIONS	
DATE	DESCRIPTION

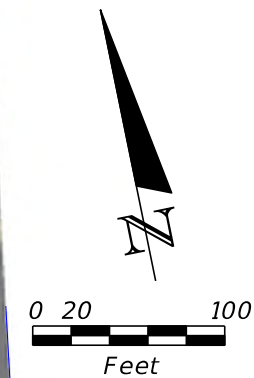
Kimley»Horn
 Certificate Of Authorization No. 696
 Ramon F. Breton, P.E.
 P.E. License No. 53139
 200 South Orange Avenue, Suite 600
 Orlando, Florida 32801

TAMPA HILLSBOROUGH EXPRESSWAY AUTHORITY		
ROAD NO.	COUNTY	THEA PROJECT NO.
618	HILLSBOROUGH	P-01619

ROADWAY PLAN

SHEET NO.
22

DRAFT



MATCH LINE STA. 969+50.00

MATCH LINE STA. 983+50.00

301

301

LEGEND:

- MILLING, RESURFACING, AND OVERBUILD
- ROADWAY WIDENING/NEW CONSTRUCTION
- EXIST. BRIDGE
- BRIDGE WIDENING/NEW BRIDGE
- SOD
- EXIST. L/A RW LINE
- EXIST. POND
- PROP. POND MODIFICATIONS

REVISIONS			
DATE	DESCRIPTION	DATE	DESCRIPTION






Kimley»Horn
 Certificate Of Authorization No. 696
 Ramon F. Breton, P.E.
 P.E. License No. 53139
 200 South Orange Avenue, Suite 600
 Orlando, Florida 32801

TAMPA HILLSBOROUGH EXPRESSWAY AUTHORITY		
ROAD NO.	COUNTY	THEA PROJECT NO.
618	HILLSBOROUGH	P-01619

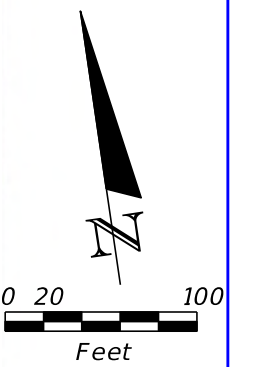
ROADWAY PLAN

SHEET NO.
23

LEGEND:

	MILLING, RESURFACING, AND OVERBUILD
	ROADWAY WIDENING/NEW CONSTRUCTION
	SOD
	EXIST. L/A RW LINE
	EXIST. POND

DRAFT



MATCH LINE STA. 983+50.00

MATCH LINE STA. 997+50.00

REVISIONS			
DATE	DESCRIPTION	DATE	DESCRIPTION

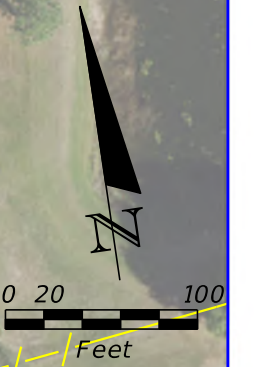
Kimley»Horn
 Certificate Of Authorization No. 696
 Ramon F. Breton, P.E.
 P.E. License No. 53139
 200 South Orange Avenue, Suite 600
 Orlando, Florida 32801

TAMPA HILLSBOROUGH EXPRESSWAY AUTHORITY		
ROAD NO.	COUNTY	THEA PROJECT NO.
618	HILLSBOROUGH	P-01619

ROADWAY PLAN

SHEET NO.
24

DRAFT



MATCH LINE STA. 997+50.00



LEGEND:

- MILLING, RESURFACING, AND OVERBUILD
- ROADWAY WIDENING/NEW CONSTRUCTION
- SOD
- EXIST. L/A RW LINE
- EXIST. POND

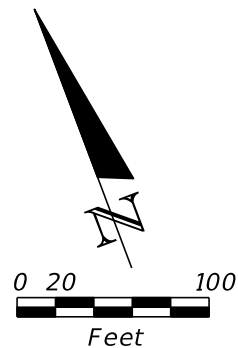
REVISIONS			
DATE	DESCRIPTION	DATE	DESCRIPTION

Kimley»Horn
 Certificate Of Authorization No. 696
 Ramon F. Breton, P.E.
 P.E. License No. 53139
 200 South Orange Avenue, Suite 600
 Orlando, Florida 32801

TAMPA HILLSBOROUGH EXPRESSWAY AUTHORITY		
ROAD NO.	COUNTY	THEA PROJECT NO.
618	HILLSBOROUGH	P-01619

ROADWAY PLAN

SHEET NO.
25






MATCH LINE A - SEE SHEET 16

78TH ST

DRAFT

LEGEND:

	MILLING, RESURFACING, AND OVERBUILD
	EXIST. L/A RW LINE
	EXIST. POND

REVISIONS			
DATE	DESCRIPTION	DATE	DESCRIPTION

Kimley»Horn
 Certificate Of Authorization No. 696
 Ramon F. Breton, P.E.
 P.E. License No. 53139
 200 South Orange Avenue, Suite 600
 Orlando, Florida 32801

TAMPA HILLSBOROUGH EXPRESSWAY AUTHORITY		
ROAD NO.	COUNTY	THEA PROJECT NO.
618	HILLSBOROUGH	P-01619

ROADWAY PLAN

SHEET NO.
26