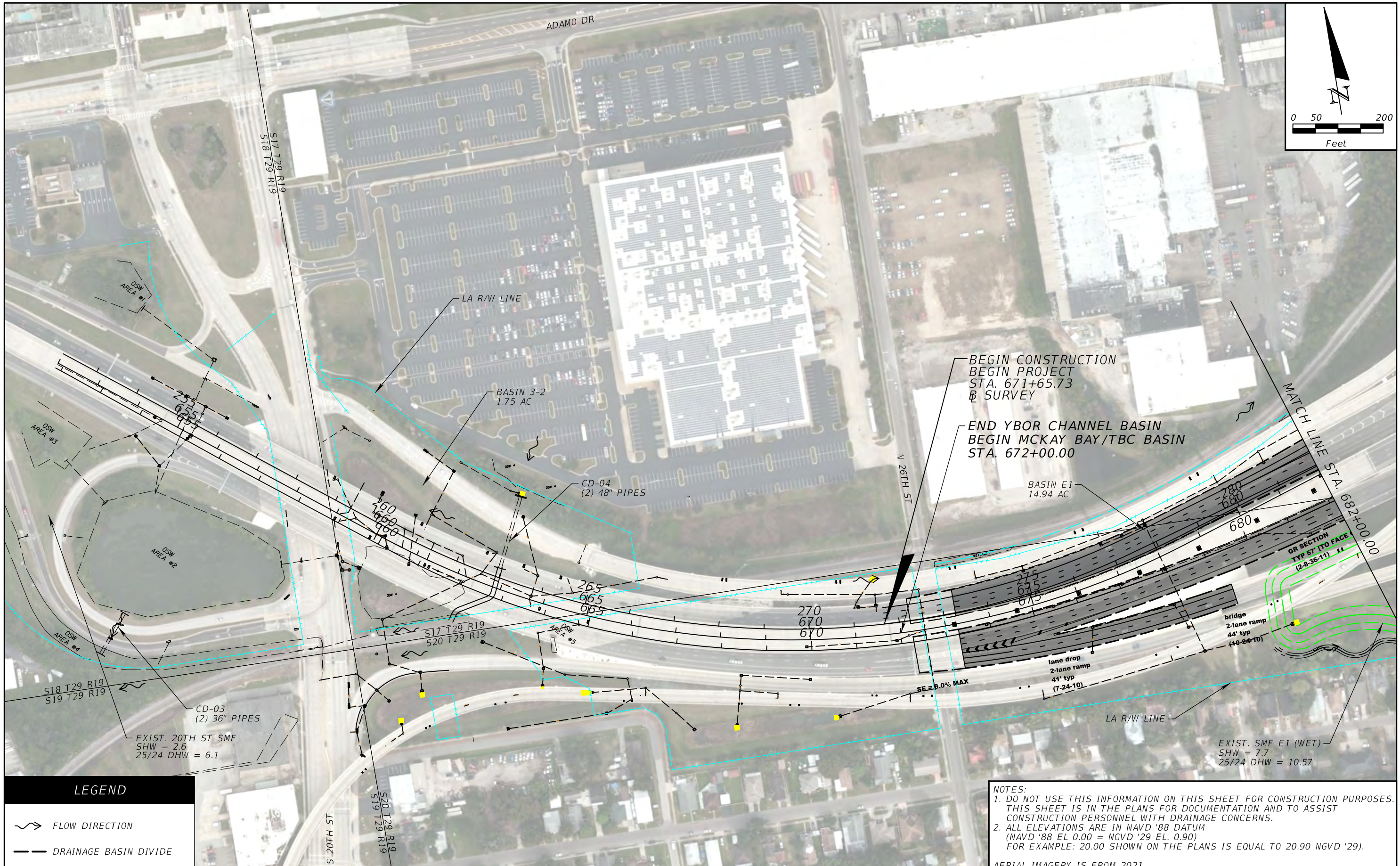
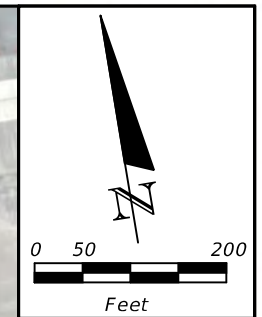


Appendix C

Added Impervious Area Maps



BEGIN CONSTRUCTION
 BEGIN PROJECT
 STA. 671+65.73
 SURVEY

END YBOR CHANNEL BASIN
 BEGIN MCKAY BAY/TBC BASIN
 STA. 672+00.00

MATCH LINE STA. 682+00.00

GR SECTION
 TYP 57 (TO FACE)
 (2-8-36-11)

bridge
 2-lane ramp
 44' typ
 (40-24-10)

lane drop
 2-lane ramp
 41' typ
 (7-24-10)

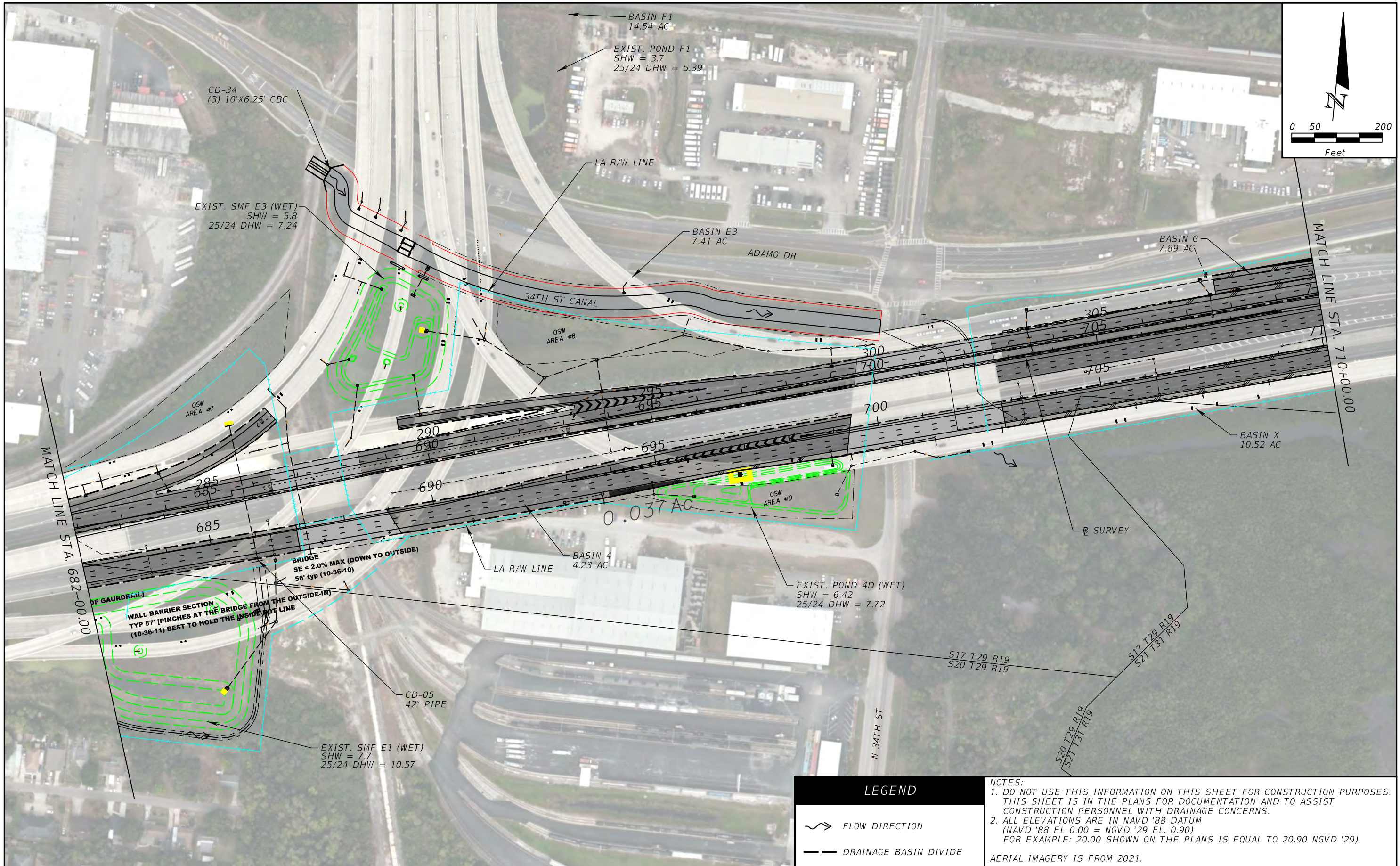
EXIST. SMF E1 (WET)
 SHW = 7.7
 25/24 DHW = 10.57

LEGEND	
	FLOW DIRECTION
	DRAINAGE BASIN DIVIDE

NOTES:
 1. DO NOT USE THIS INFORMATION ON THIS SHEET FOR CONSTRUCTION PURPOSES. THIS SHEET IS IN THE PLANS FOR DOCUMENTATION AND TO ASSIST CONSTRUCTION PERSONNEL WITH DRAINAGE CONCERNS.
 2. ALL ELEVATIONS ARE IN NAVD '88 DATUM (NAVD '88 EL 0.00 = NGVD '29 EL. 0.90) FOR EXAMPLE: 20.00 SHOWN ON THE PLANS IS EQUAL TO 20.90 NGVD '29).

AERIAL IMAGERY IS FROM 2021.

REVISIONS				CHRISTOPHER BRADLEY CARVER, P.E. P.E. LICENSE NUMBER 49460 WGI, INC. 3111 W. DR. MARTIN LUTHER KING JR. BLVD. SUITE 375 TAMPA, FLORIDA 33607	TAMPA HILLSBOROUGH EXPRESSWAY AUTHORITY			DRAINAGE MAP ALTERNATIVE 1	SHEET NO. 1
DATE	DESCRIPTION	DATE	DESCRIPTION		ROAD NO.	COUNTY	PROJECT NUMBER		
					SR 618	HILLSBOROUGH	HI0002		



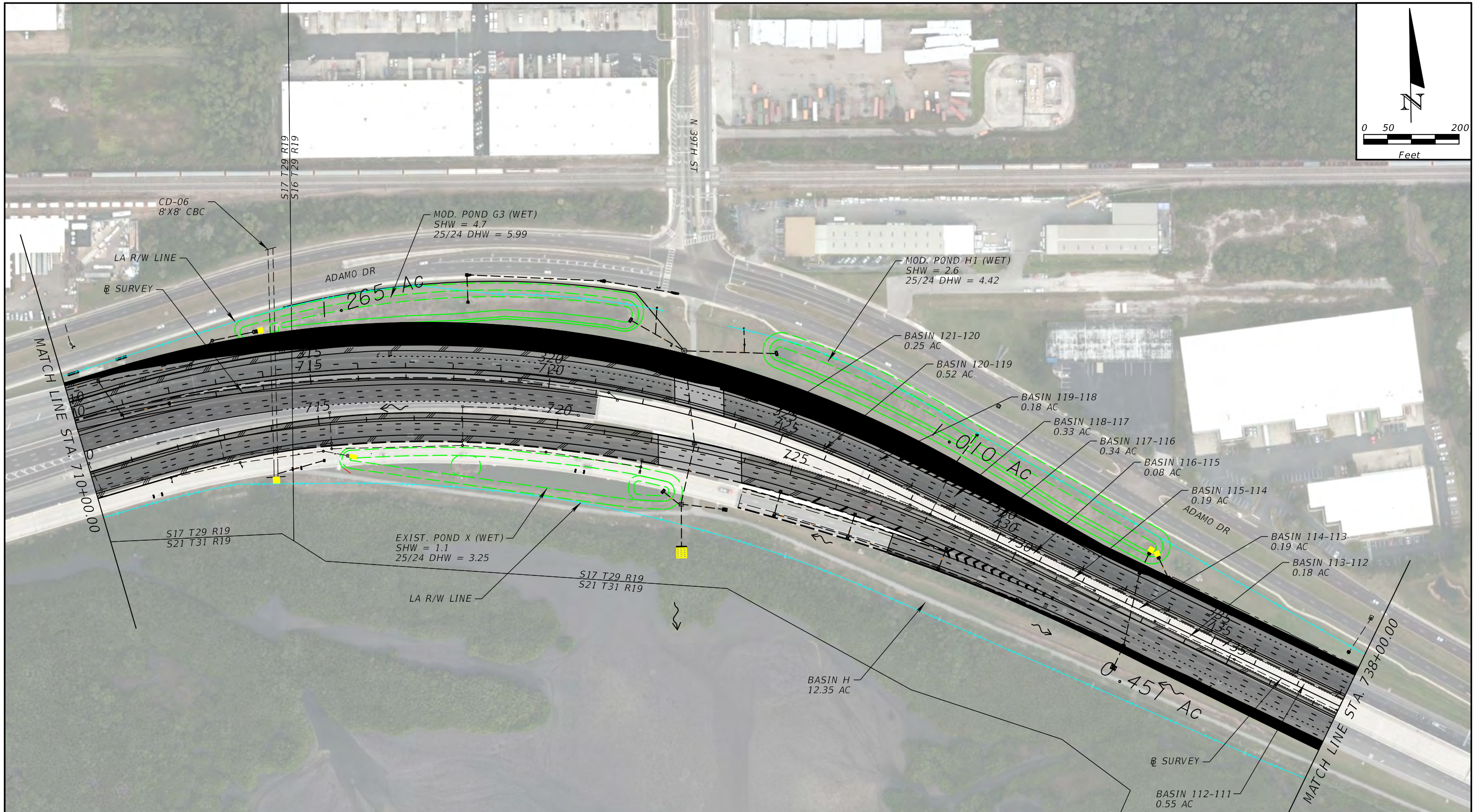
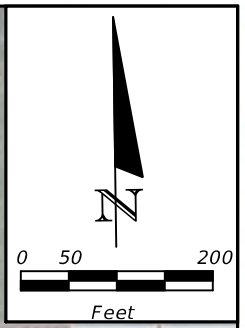
REVISIONS			
DATE	DESCRIPTION	DATE	DESCRIPTION

CHRISTOPHER BRADLEY CARVER, P.E.
 P.E. LICENSE NUMBER 49460
 WGI, INC.
 3111 W. DR. MARTIN LUTHER KING JR. BLVD.
 SUITE 375
 TAMPA, FLORIDA 33607

TAMPA HILLSBOROUGH EXPRESSWAY AUTHORITY		
ROAD NO.	COUNTY	PROJECT NUMBER
SR 618	HILLSBOROUGH	H10002

**DRAINAGE MAP
 ALTERNATIVE 1**

SHEET NO.
 2



NOTES:
 1. DO NOT USE THIS INFORMATION ON THIS SHEET FOR CONSTRUCTION PURPOSES. THIS SHEET IS IN THE PLANS FOR DOCUMENTATION AND TO ASSIST CONSTRUCTION PERSONNEL WITH DRAINAGE CONCERNS.
 2. ALL ELEVATIONS ARE IN NAVD '88 DATUM (NAVD '88 EL 0.00 = NGVD '29 EL. 0.90) FOR EXAMPLE: 20.00 SHOWN ON THE PLANS IS EQUAL TO 20.90 NGVD '29).
 AERIAL IMAGERY IS FROM 2021.

LEGEND	
	FLOW DIRECTION
	DRAINAGE BASIN DIVIDE

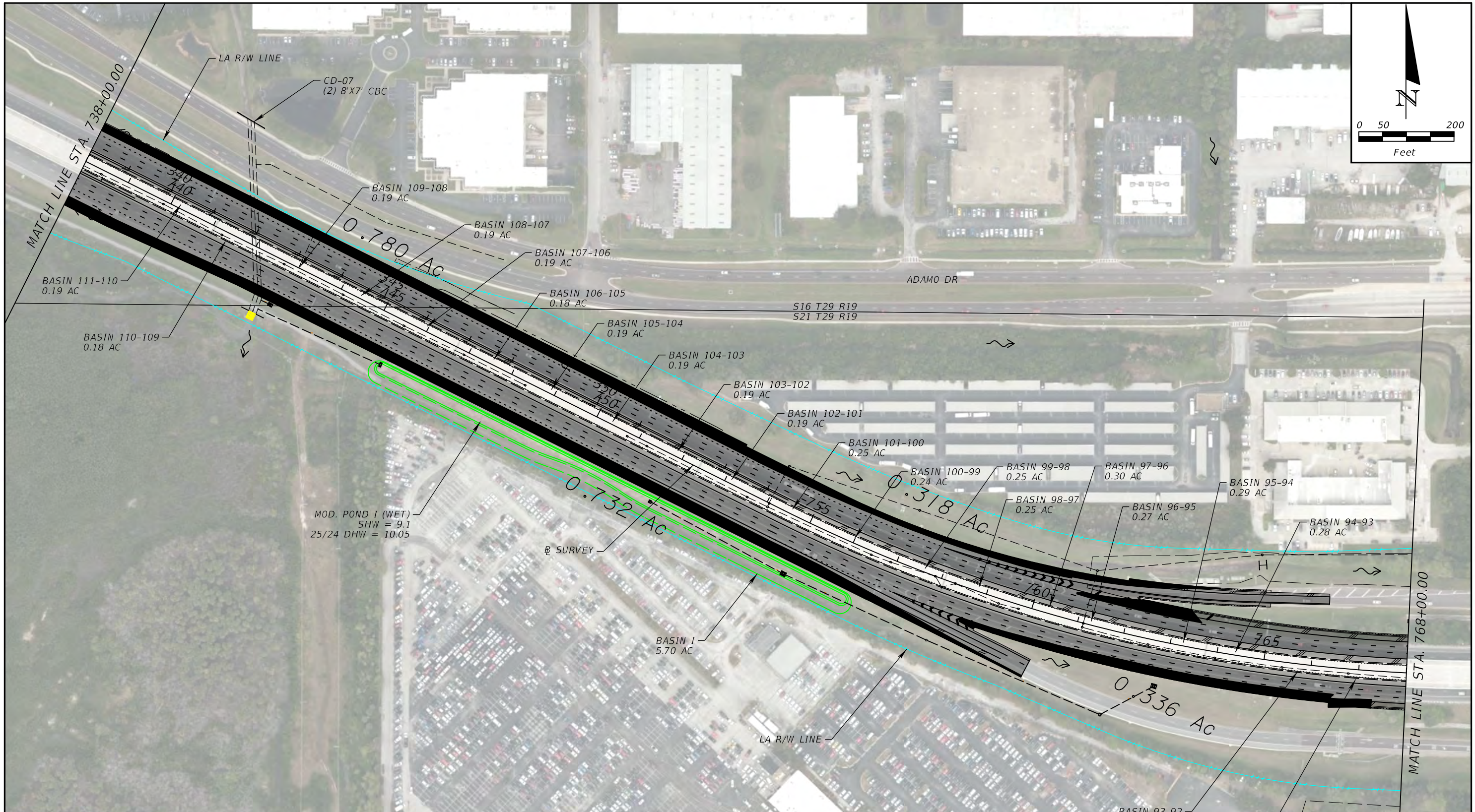
REVISIONS			
DATE	DESCRIPTION	DATE	DESCRIPTION

CHRISTOPHER BRADLEY CARVER, P.E.
 P.E. LICENSE NUMBER 49460
 WGI, INC.
 3111 W. DR. MARTIN LUTHER KING JR. BLVD.
 SUITE 375
 TAMPA, FLORIDA 33607

TAMPA HILLSBOROUGH EXPRESSWAY AUTHORITY		
ROAD NO.	COUNTY	PROJECT NUMBER
SR 618	HILLSBOROUGH	HI0002

**DRAINAGE MAP
 ALTERNATIVE 1**

SHEET NO.
 3



NOTES:
 1. DO NOT USE THIS INFORMATION ON THIS SHEET FOR CONSTRUCTION PURPOSES. THIS SHEET IS IN THE PLANS FOR DOCUMENTATION AND TO ASSIST CONSTRUCTION PERSONNEL WITH DRAINAGE CONCERNS.
 2. ALL ELEVATIONS ARE IN NAVD '88 DATUM (NAVD '88 EL 0.00 = NGVD '29 EL. 0.90) FOR EXAMPLE: 20.00 SHOWN ON THE PLANS IS EQUAL TO 20.90 NGVD '29).

LEGEND	
	FLOW DIRECTION
	DRAINAGE BASIN DIVIDE

AERIAL IMAGERY IS FROM 2021.

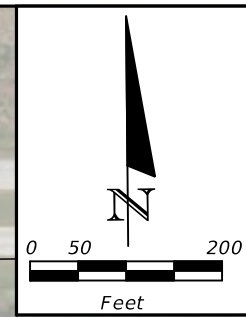
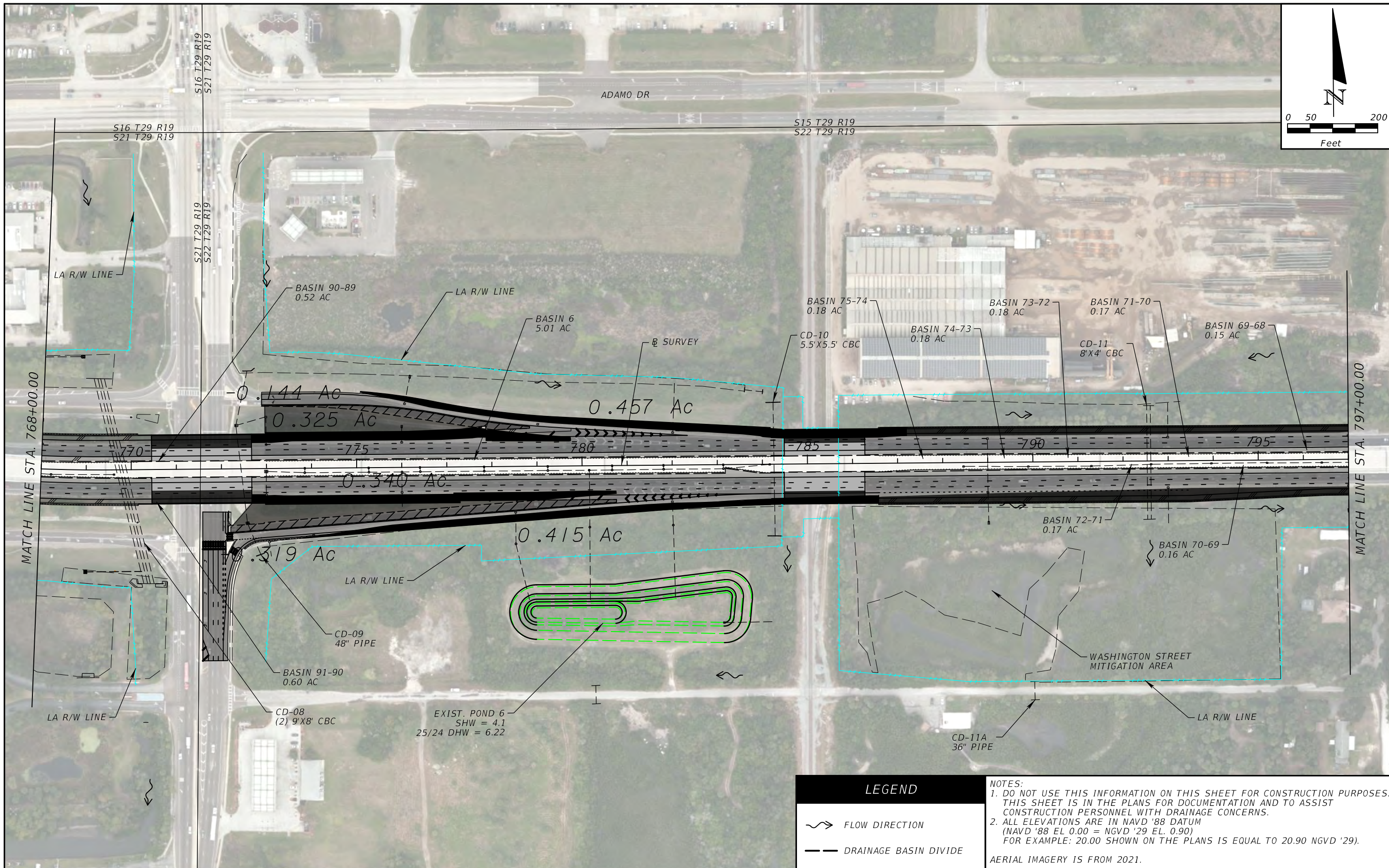
REVISIONS			
DATE	DESCRIPTION	DATE	DESCRIPTION

CHRISTOPHER BRADLEY CARVER, P.E.
 P.E. LICENSE NUMBER 49460
 WGI, INC.
 3111 W. DR. MARTIN LUTHER KING JR. BLVD.
 SUITE 375
 TAMPA, FLORIDA 33607

TAMPA HILLSBOROUGH EXPRESSWAY AUTHORITY		
ROAD NO.	COUNTY	PROJECT NUMBER
SR 618	HILLSBOROUGH	HI0002

**DRAINAGE MAP
 ALTERNATIVE 1**

SHEET NO.
 4



LEGEND	
	FLOW DIRECTION
	DRAINAGE BASIN DIVIDE

NOTES:
 1. DO NOT USE THIS INFORMATION ON THIS SHEET FOR CONSTRUCTION PURPOSES. THIS SHEET IS IN THE PLANS FOR DOCUMENTATION AND TO ASSIST CONSTRUCTION PERSONNEL WITH DRAINAGE CONCERNS.
 2. ALL ELEVATIONS ARE IN NAVD '88 DATUM (NAVD '88 EL 0.00 = NGVD '29 EL. 0.90) FOR EXAMPLE: 20.00 SHOWN ON THE PLANS IS EQUAL TO 20.90 NGVD '29).
 AERIAL IMAGERY IS FROM 2021.

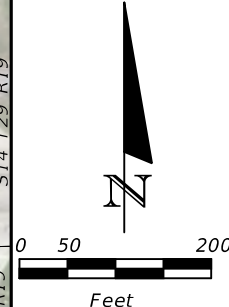
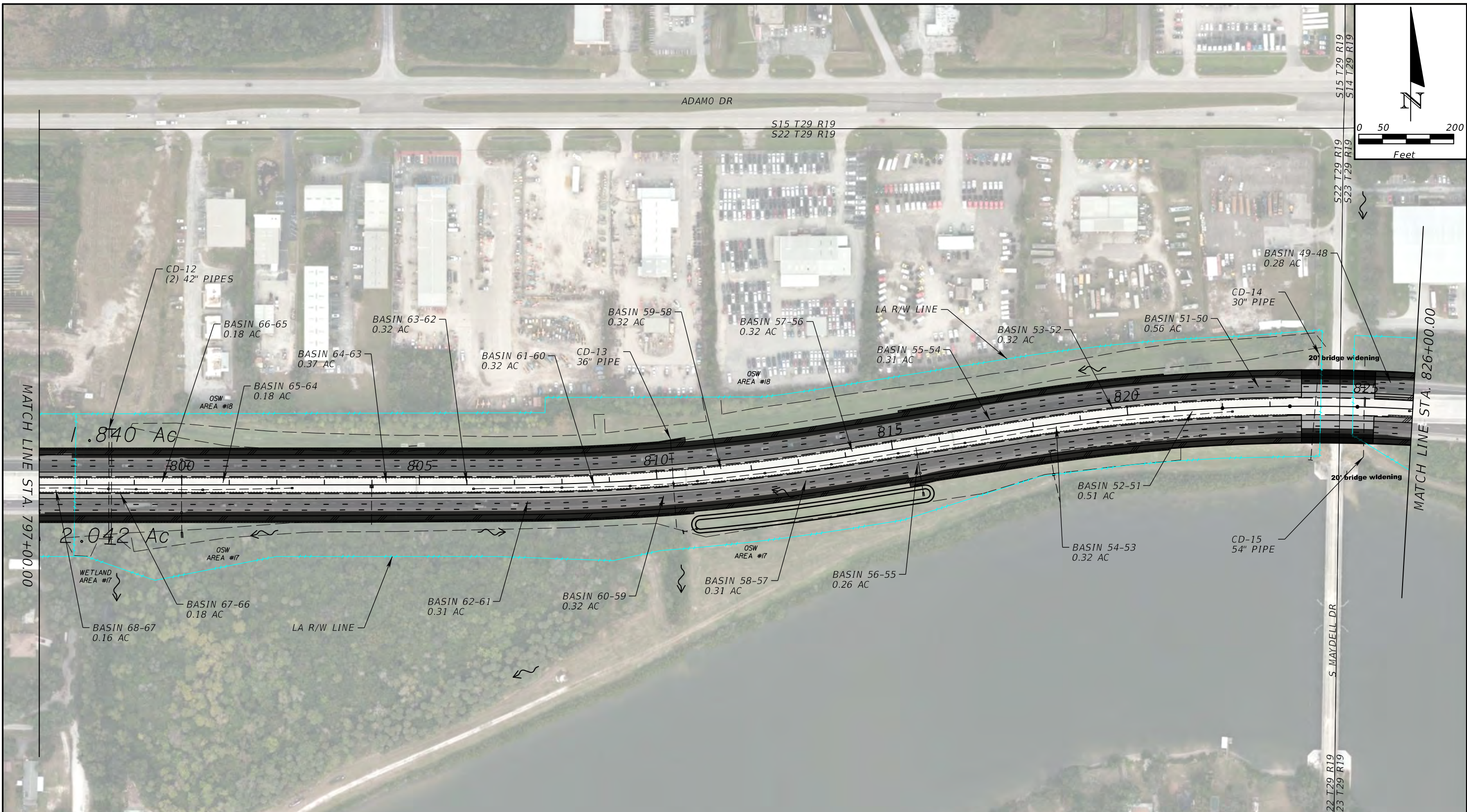
REVISIONS			
DATE	DESCRIPTION	DATE	DESCRIPTION

CHRISTOPHER BRADLEY CARVER, P.E.
 P.E. LICENSE NUMBER 49460
 WGI, INC.
 3111 W. DR. MARTIN LUTHER KING JR. BLVD.
 SUITE 375
 TAMPA, FLORIDA 33607

TAMPA HILLSBOROUGH EXPRESSWAY AUTHORITY		
ROAD NO.	COUNTY	PROJECT NUMBER
SR 618	HILLSBOROUGH	HI0002

**DRAINAGE MAP
 ALTERNATIVE 1**

SHEET NO.
5



NOTES:
 1. DO NOT USE THIS INFORMATION ON THIS SHEET FOR CONSTRUCTION PURPOSES. THIS SHEET IS IN THE PLANS FOR DOCUMENTATION AND TO ASSIST CONSTRUCTION PERSONNEL WITH DRAINAGE CONCERNS.
 2. ALL ELEVATIONS ARE IN NAVD '88 DATUM (NAVD '88 EL 0.00 = NGVD '29 EL. 0.90) FOR EXAMPLE: 20.00 SHOWN ON THE PLANS IS EQUAL TO 20.90 NGVD '29).
 AERIAL IMAGERY IS FROM 2021.

LEGEND	
	FLOW DIRECTION
	DRAINAGE BASIN DIVIDE

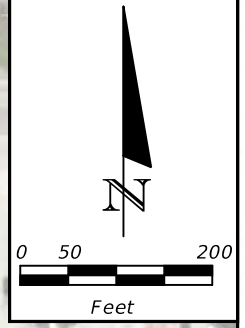
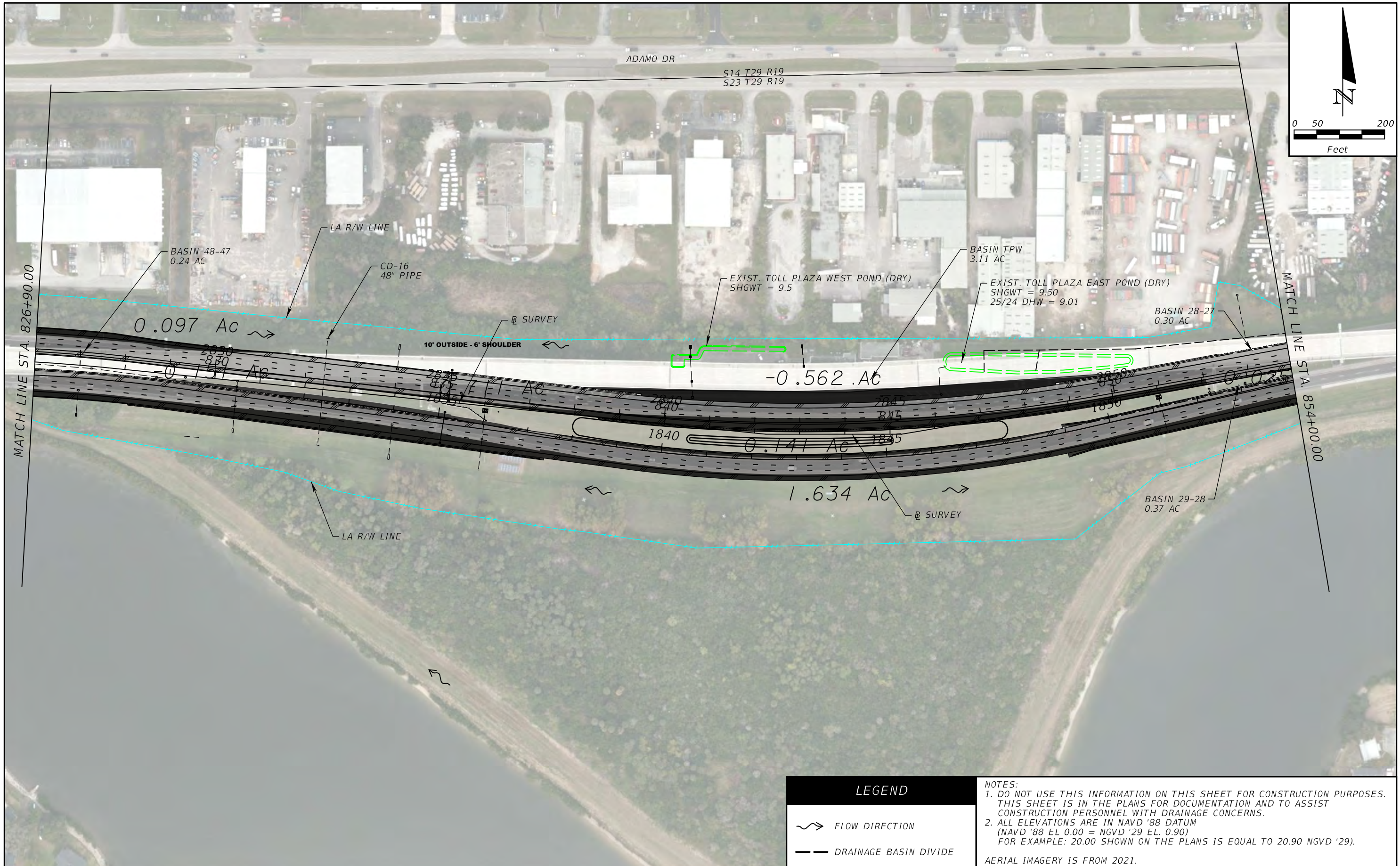
REVISIONS			
DATE	DESCRIPTION	DATE	DESCRIPTION

CHRISTOPHER BRADLEY CARVER, P.E.
 P.E. LICENSE NUMBER 49460
 WGI, INC.
 3111 W. DR. MARTIN LUTHER KING JR. BLVD.
 SUITE 375
 TAMPA, FLORIDA 33607

TAMPA HILLSBOROUGH EXPRESSWAY AUTHORITY		
ROAD NO.	COUNTY	PROJECT NUMBER
SR 618	HILLSBOROUGH	HI0002

**DRAINAGE MAP
 ALTERNATIVE 1**

SHEET NO.
 6



LEGEND	
	FLOW DIRECTION
	DRAINAGE BASIN DIVIDE

NOTES:
 1. DO NOT USE THIS INFORMATION ON THIS SHEET FOR CONSTRUCTION PURPOSES. THIS SHEET IS IN THE PLANS FOR DOCUMENTATION AND TO ASSIST CONSTRUCTION PERSONNEL WITH DRAINAGE CONCERNS.
 2. ALL ELEVATIONS ARE IN NAVD '88 DATUM (NAVD '88 EL 0.00 = NGVD '29 EL. 0.90) FOR EXAMPLE: 20.00 SHOWN ON THE PLANS IS EQUAL TO 20.90 NGVD '29).
 AERIAL IMAGERY IS FROM 2021.

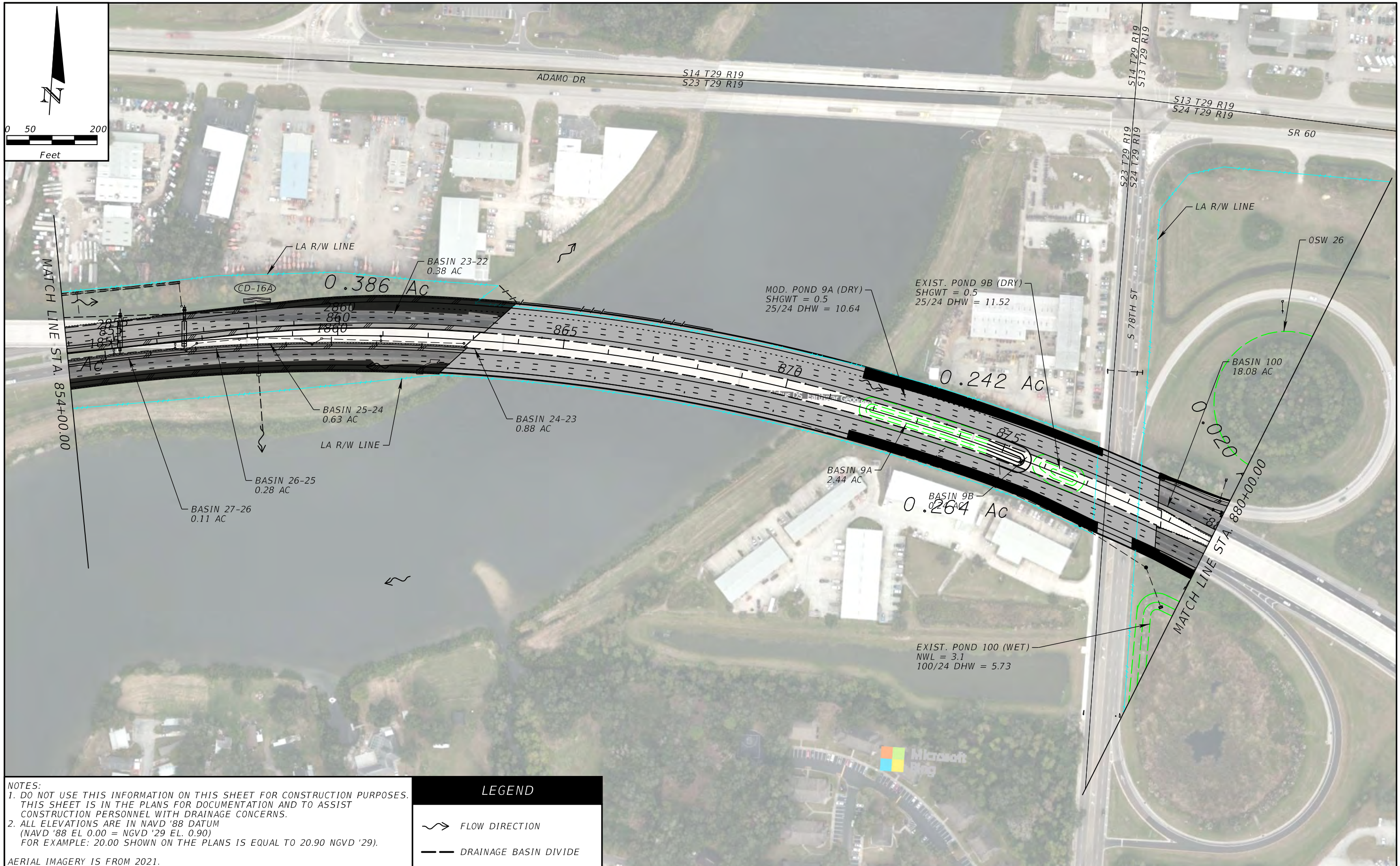
REVISIONS			
DATE	DESCRIPTION	DATE	DESCRIPTION

CHRISTOPHER BRADLEY CARVER, P.E.
 P.E. LICENSE NUMBER 49460
 WGI, INC.
 3111 W. DR. MARTIN LUTHER KING JR. BLVD.
 SUITE 375
 TAMPA, FLORIDA 33607

TAMPA HILLSBOROUGH EXPRESSWAY AUTHORITY		
ROAD NO.	COUNTY	PROJECT NUMBER
SR 618	HILLSBOROUGH	HI0002

**DRAINAGE MAP
 ALTERNATIVE 1**

SHEET NO.
7



NOTES:
 1. DO NOT USE THIS INFORMATION ON THIS SHEET FOR CONSTRUCTION PURPOSES. THIS SHEET IS IN THE PLANS FOR DOCUMENTATION AND TO ASSIST CONSTRUCTION PERSONNEL WITH DRAINAGE CONCERNS.
 2. ALL ELEVATIONS ARE IN NAVD '88 DATUM (NAVD '88 EL. 0.00 = NGVD '29 EL. 0.90) FOR EXAMPLE: 20.00 SHOWN ON THE PLANS IS EQUAL TO 20.90 NGVD '29).
 AERIAL IMAGERY IS FROM 2021.

LEGEND	
	FLOW DIRECTION
	DRAINAGE BASIN DIVIDE

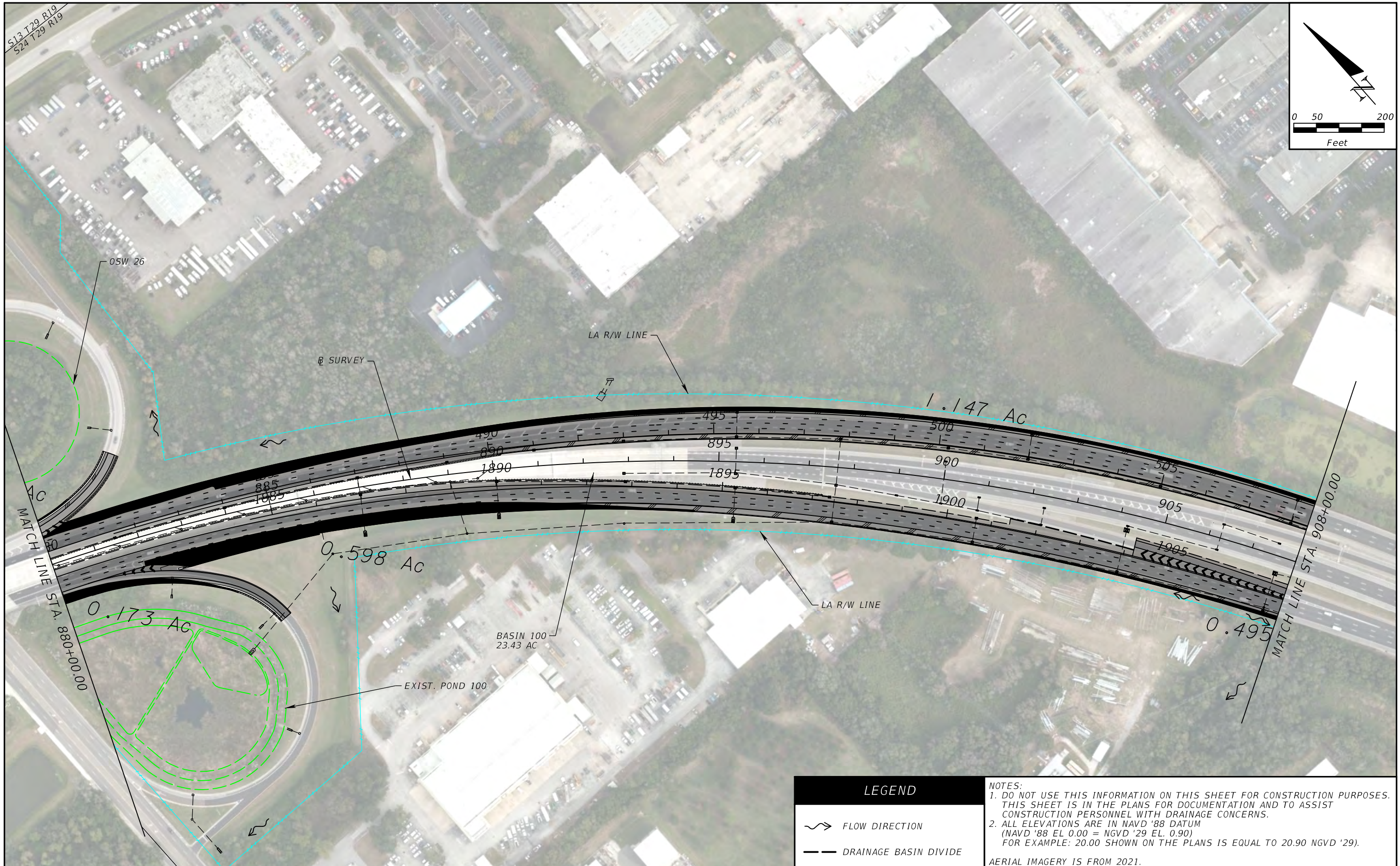
REVISIONS			
DATE	DESCRIPTION	DATE	DESCRIPTION

CHRISTOPHER BRADLEY CARVER, P.E.
 P.E. LICENSE NUMBER 49460
 WGI, INC.
 3111 W. DR. MARTIN LUTHER KING JR. BLVD.
 SUITE 375
 TAMPA, FLORIDA 33607

TAMPA HILLSBOROUGH EXPRESSWAY AUTHORITY		
ROAD NO.	COUNTY	PROJECT NUMBER
SR 618	HILLSBOROUGH	HI0002

**DRAINAGE MAP
 ALTERNATIVE 1**

SHEET NO.
 8



LEGEND		
	FLOW DIRECTION	
	DRAINAGE BASIN DIVIDE	

NOTES:
 1. DO NOT USE THIS INFORMATION ON THIS SHEET FOR CONSTRUCTION PURPOSES. THIS SHEET IS IN THE PLANS FOR DOCUMENTATION AND TO ASSIST CONSTRUCTION PERSONNEL WITH DRAINAGE CONCERNS.
 2. ALL ELEVATIONS ARE IN NAVD '88 DATUM (NAVD '88 EL 0.00 = NGVD '29 EL. 0.90) FOR EXAMPLE: 20.00 SHOWN ON THE PLANS IS EQUAL TO 20.90 NGVD '29).
 AERIAL IMAGERY IS FROM 2021.

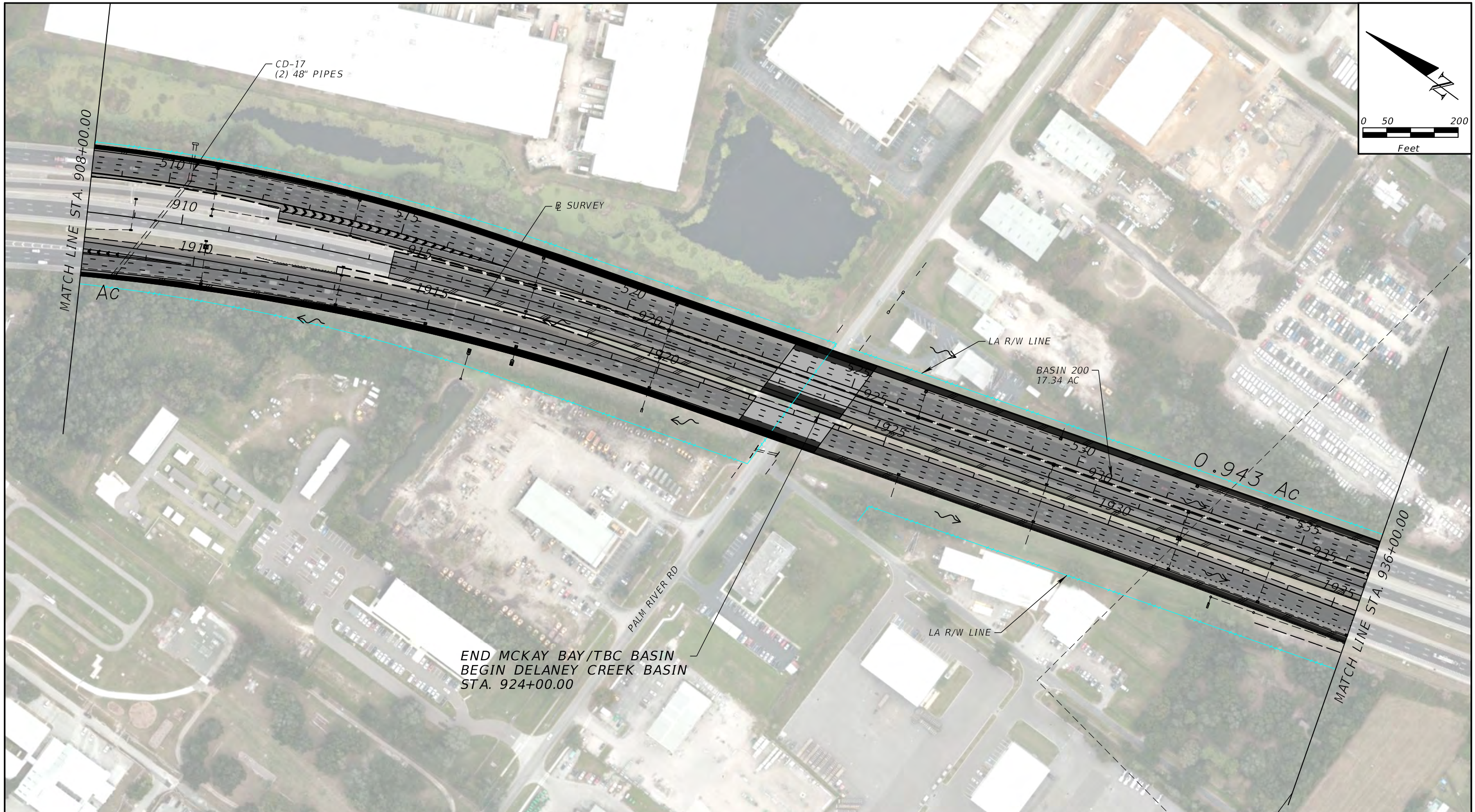
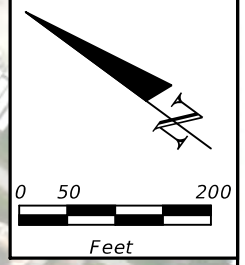
REVISIONS			
DATE	DESCRIPTION	DATE	DESCRIPTION

CHRISTOPHER BRADLEY CARVER, P.E.
 P.E. LICENSE NUMBER 49460
 WGI, INC.
 3111 W. DR. MARTIN LUTHER KING JR. BLVD.
 SUITE 375
 TAMPA, FLORIDA 33607

TAMPA HILLSBOROUGH EXPRESSWAY AUTHORITY		
ROAD NO.	COUNTY	PROJECT NUMBER
SR 618	HILLSBOROUGH	HI0002

**DRAINAGE MAP
 ALTERNATIVE 1**

SHEET NO.
 9



END MCKAY BAY/TBC BASIN
 BEGIN DELANEY CREEK BASIN
 STA. 924+00.00

LEGEND	
	FLOW DIRECTION
	DRAINAGE BASIN DIVIDE

NOTES:
 1. DO NOT USE THIS INFORMATION ON THIS SHEET FOR CONSTRUCTION PURPOSES. THIS SHEET IS IN THE PLANS FOR DOCUMENTATION AND TO ASSIST CONSTRUCTION PERSONNEL WITH DRAINAGE CONCERNS.
 2. ALL ELEVATIONS ARE IN NAVD '88 DATUM (NAVD '88 EL 0.00 = NGVD '29 EL. 0.90) FOR EXAMPLE: 20.00 SHOWN ON THE PLANS IS EQUAL TO 20.90 NGVD '29).
 AERIAL IMAGERY IS FROM 2021.

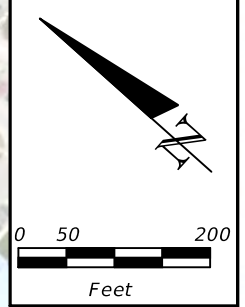
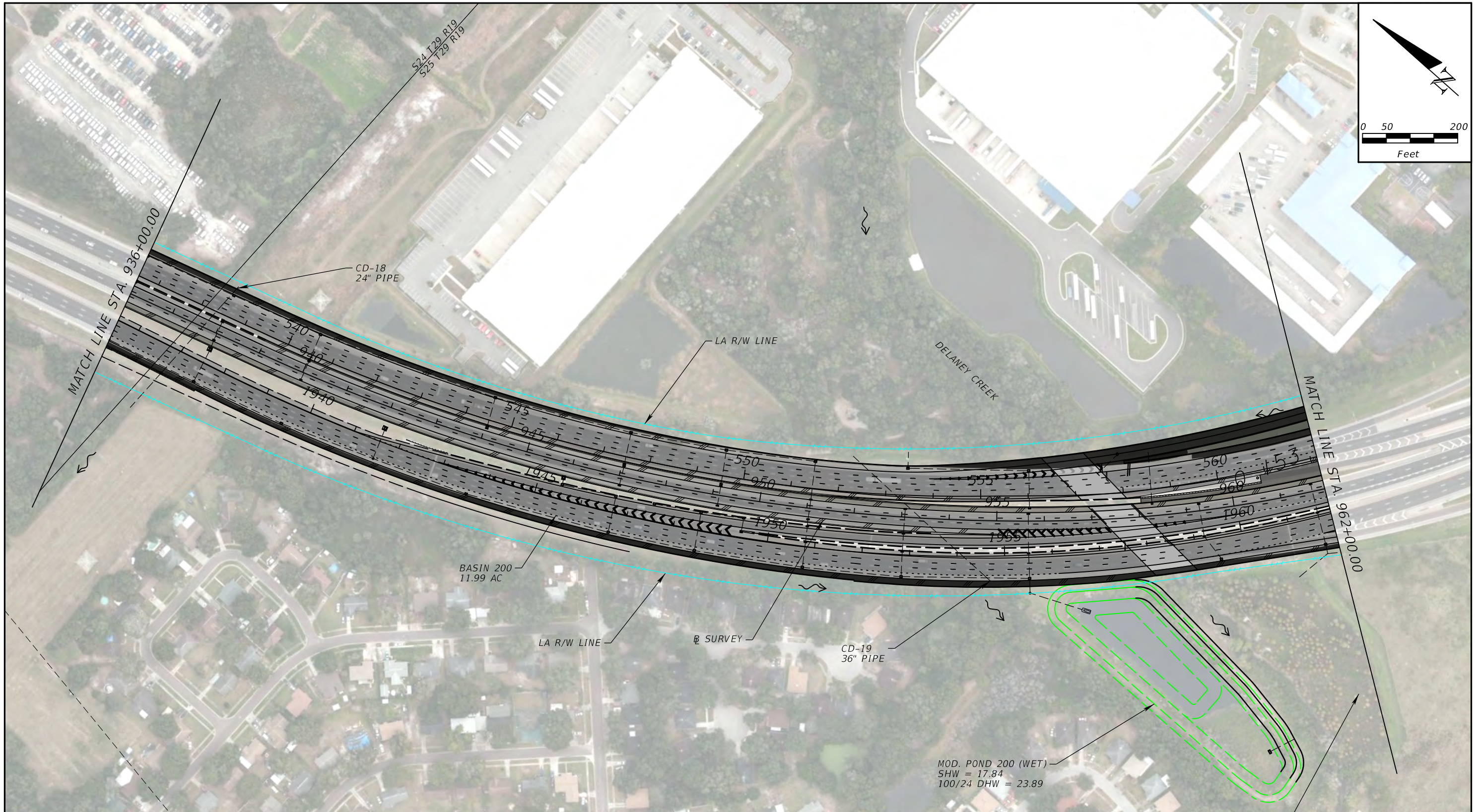
REVISIONS			
DATE	DESCRIPTION	DATE	DESCRIPTION

CHRISTOPHER BRADLEY CARVER, P.E.
 P.E. LICENSE NUMBER 49460
 WGI, INC.
 3111 W. DR. MARTIN LUTHER KING JR. BLVD.
 SUITE 375
 TAMPA, FLORIDA 33607

TAMPA HILLSBOROUGH EXPRESSWAY AUTHORITY		
ROAD NO.	COUNTY	PROJECT NUMBER
SR 618	HILLSBOROUGH	HI0002

**DRAINAGE MAP
 ALTERNATIVE 1**

SHEET NO.
 10



NOTES:
 1. DO NOT USE THIS INFORMATION ON THIS SHEET FOR CONSTRUCTION PURPOSES. THIS SHEET IS IN THE PLANS FOR DOCUMENTATION AND TO ASSIST CONSTRUCTION PERSONNEL WITH DRAINAGE CONCERNS.
 2. ALL ELEVATIONS ARE IN NAVD '88 DATUM (NAVD '88 EL 0.00 = NGVD '29 EL. 0.90) FOR EXAMPLE: 20.00 SHOWN ON THE PLANS IS EQUAL TO 20.90 NGVD '29).

AERIAL IMAGERY IS FROM 2021.

LEGEND	
	FLOW DIRECTION
	DRAINAGE BASIN DIVIDE

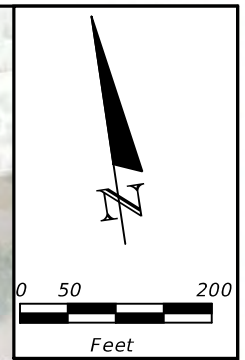
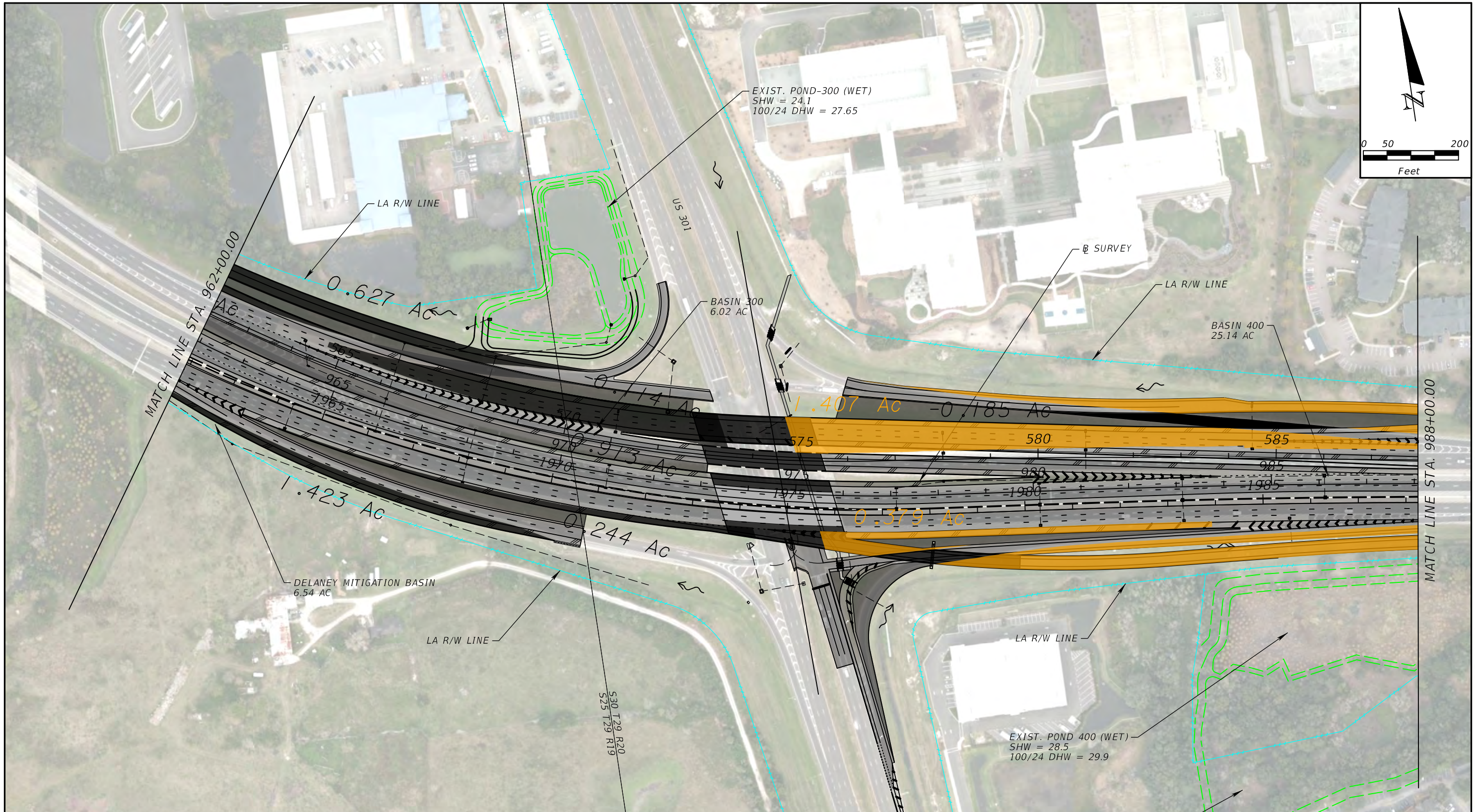
REVISIONS			
DATE	DESCRIPTION	DATE	DESCRIPTION

CHRISTOPHER BRADLEY CARVER, P.E.
 P.E. LICENSE NUMBER 49460
 WGI, INC.
 3111 W. DR. MARTIN LUTHER KING JR. BLVD.
 SUITE 375
 TAMPA, FLORIDA 33607

TAMPA HILLSBOROUGH EXPRESSWAY AUTHORITY		
ROAD NO.	COUNTY	PROJECT NUMBER
SR 618	HILLSBOROUGH	HI0002

**DRAINAGE MAP
 ALTERNATIVE 1**

SHEET NO.
 11



NOTES:
 1. DO NOT USE THIS INFORMATION ON THIS SHEET FOR CONSTRUCTION PURPOSES. THIS SHEET IS IN THE PLANS FOR DOCUMENTATION AND TO ASSIST CONSTRUCTION PERSONNEL WITH DRAINAGE CONCERNS.
 2. ALL ELEVATIONS ARE IN NAVD '88 DATUM (NAVD '88 EL 0.00 = NGVD '29 EL. 0.90) FOR EXAMPLE: 20.00 SHOWN ON THE PLANS IS EQUAL TO 20.90 NGVD '29).

AERIAL IMAGERY IS FROM 2021.

LEGEND	
	FLOW DIRECTION
	DRAINAGE BASIN DIVIDE

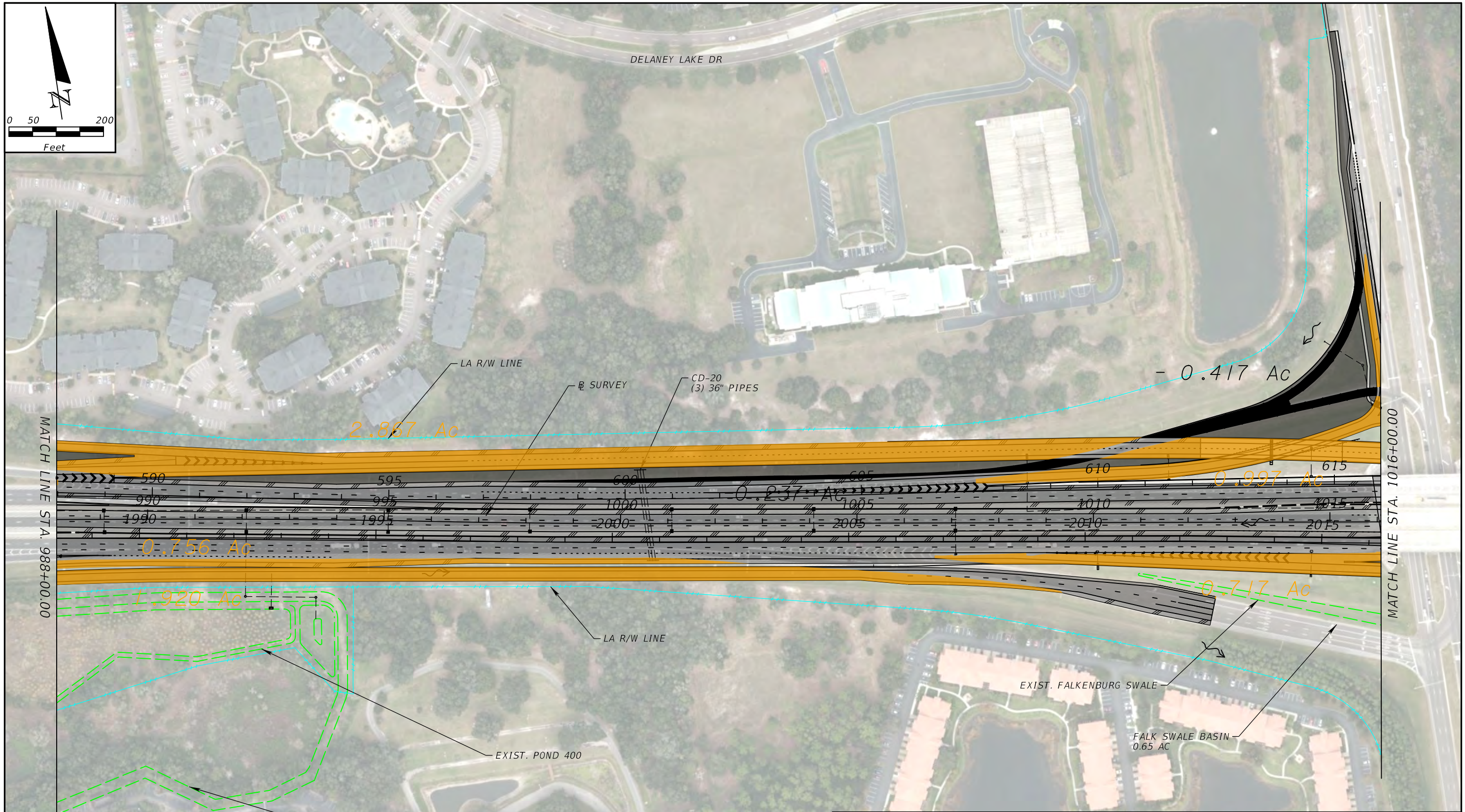
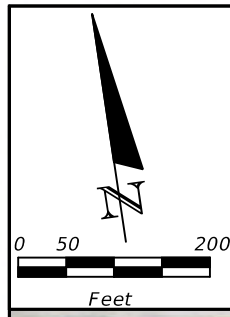
REVISIONS			
DATE	DESCRIPTION	DATE	DESCRIPTION

CHRISTOPHER BRADLEY CARVER, P.E.
 P.E. LICENSE NUMBER 49460
 WGI, INC.
 3111 W. DR. MARTIN LUTHER KING JR. BLVD.
 SUITE 375
 TAMPA, FLORIDA 33607

TAMPA HILLSBOROUGH EXPRESSWAY AUTHORITY		
ROAD NO.	COUNTY	PROJECT NUMBER
SR 618	HILLSBOROUGH	HI0002

**DRAINAGE MAP
 ALTERNATIVE 1**

SHEET NO.
 12



LEGEND	
	FLOW DIRECTION
	DRAINAGE BASIN DIVIDE

NOTES:
 1. DO NOT USE THIS INFORMATION ON THIS SHEET FOR CONSTRUCTION PURPOSES. THIS SHEET IS IN THE PLANS FOR DOCUMENTATION AND TO ASSIST CONSTRUCTION PERSONNEL WITH DRAINAGE CONCERNS.
 2. ALL ELEVATIONS ARE IN NAVD '88 DATUM (NAVD '88 EL 0.00 = NGVD '29 EL. 0.90) FOR EXAMPLE: 20.00 SHOWN ON THE PLANS IS EQUAL TO 20.90 NGVD '29).
 AERIAL IMAGERY IS FROM 2021.

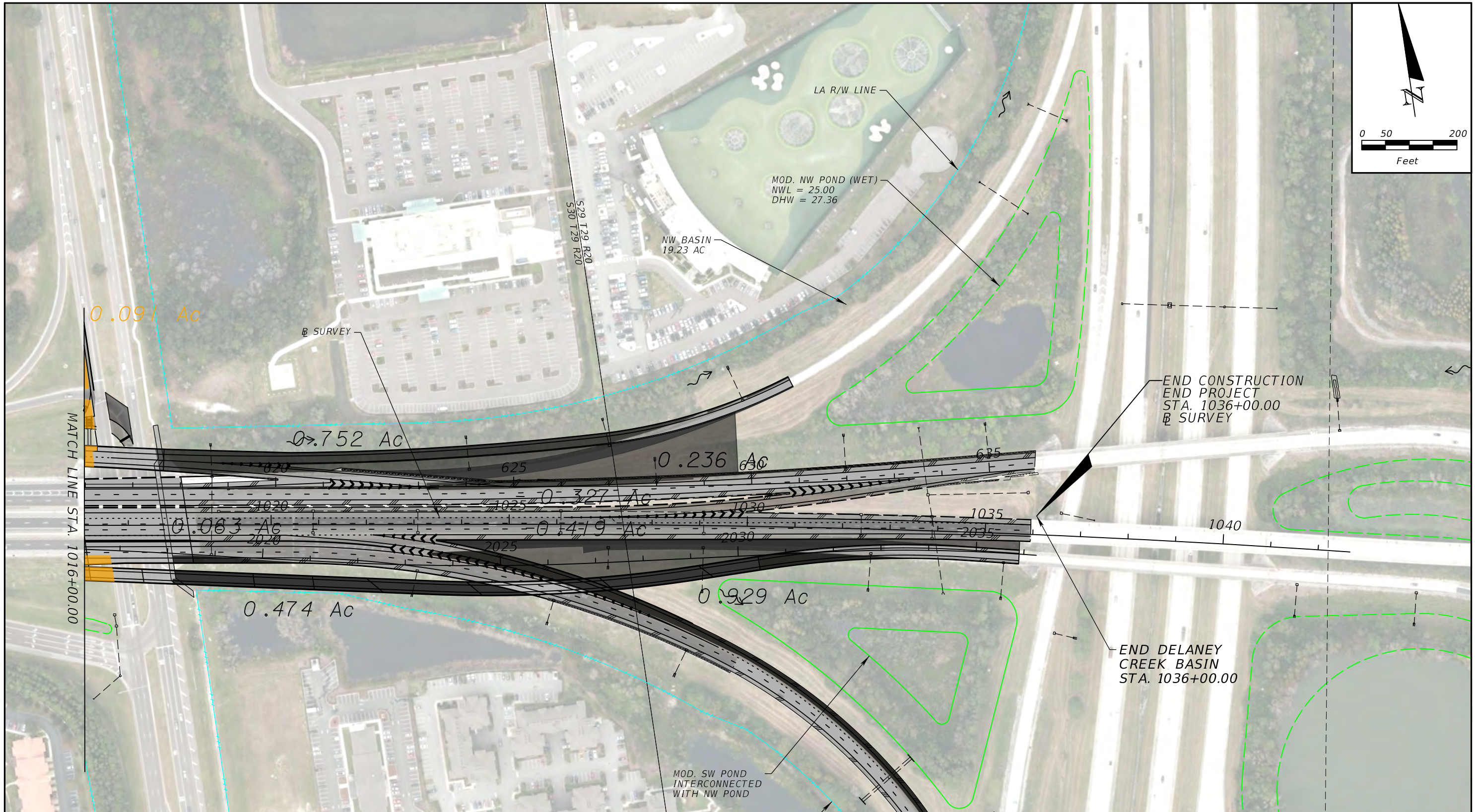
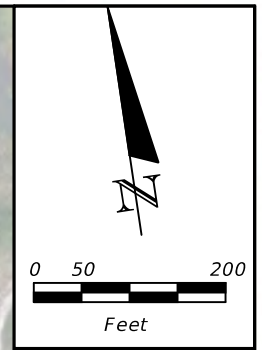
REVISIONS			
DATE	DESCRIPTION	DATE	DESCRIPTION

CHRISTOPHER BRADLEY CARVER, P.E.
 P.E. LICENSE NUMBER 49460
 WGI, INC.
 3111 W. DR. MARTIN LUTHER KING JR. BLVD.
 SUITE 375
 TAMPA, FLORIDA 33607

TAMPA HILLSBOROUGH EXPRESSWAY AUTHORITY		
ROAD NO.	COUNTY	PROJECT NUMBER
SR 618	HILLSBOROUGH	HI0002

**DRAINAGE MAP
 ALTERNATIVE 1**

SHEET NO.
13



NOTES:
 1. DO NOT USE THIS INFORMATION ON THIS SHEET FOR CONSTRUCTION PURPOSES. THIS SHEET IS IN THE PLANS FOR DOCUMENTATION AND TO ASSIST CONSTRUCTION PERSONNEL WITH DRAINAGE CONCERNS.
 2. ALL ELEVATIONS ARE IN NAVD '88 DATUM (NAVD '88 EL 0.00 = NGVD '29 EL. 0.90) FOR EXAMPLE: 20.00 SHOWN ON THE PLANS IS EQUAL TO 20.90 NGVD '29).
 AERIAL IMAGERY IS FROM 2021.

LEGEND	
	FLOW DIRECTION
	DRAINAGE BASIN DIVIDE

REVISIONS			
DATE	DESCRIPTION	DATE	DESCRIPTION

CHRISTOPHER BRADLEY CARVER, P.E.
 P.E. LICENSE NUMBER 49460
 WGI, INC.
 3111 W. DR. MARTIN LUTHER KING JR. BLVD.
 SUITE 375
 TAMPA, FLORIDA 33607

TAMPA HILLSBOROUGH EXPRESSWAY AUTHORITY		
ROAD NO.	COUNTY	PROJECT NUMBER
SR 618	HILLSBOROUGH	HI0002

**DRAINAGE MAP
 ALTERNATIVE 1**

SHEET NO.
 17